

# COMUNE DI STIO

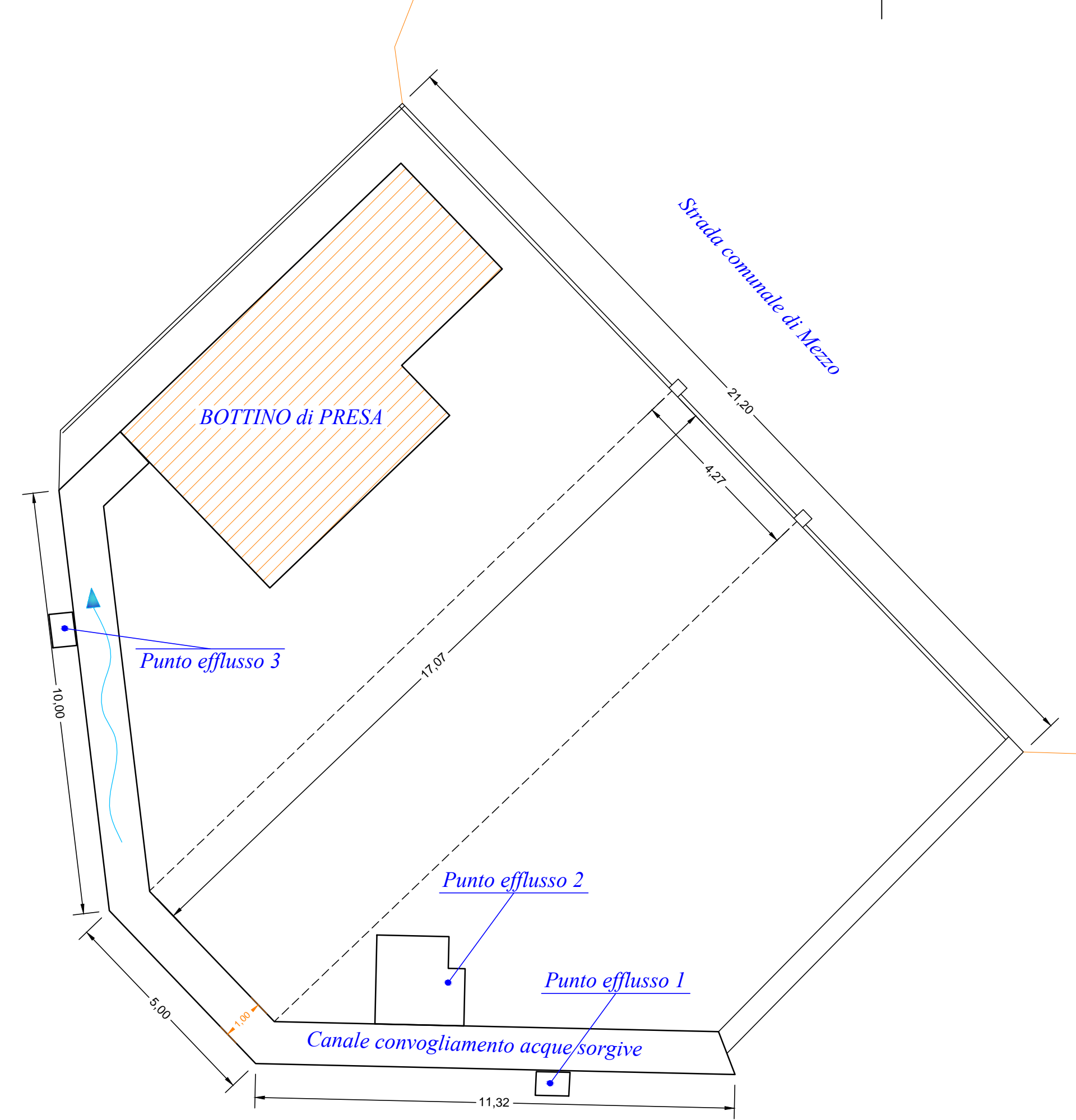
PROVINCIA DI SALERNO



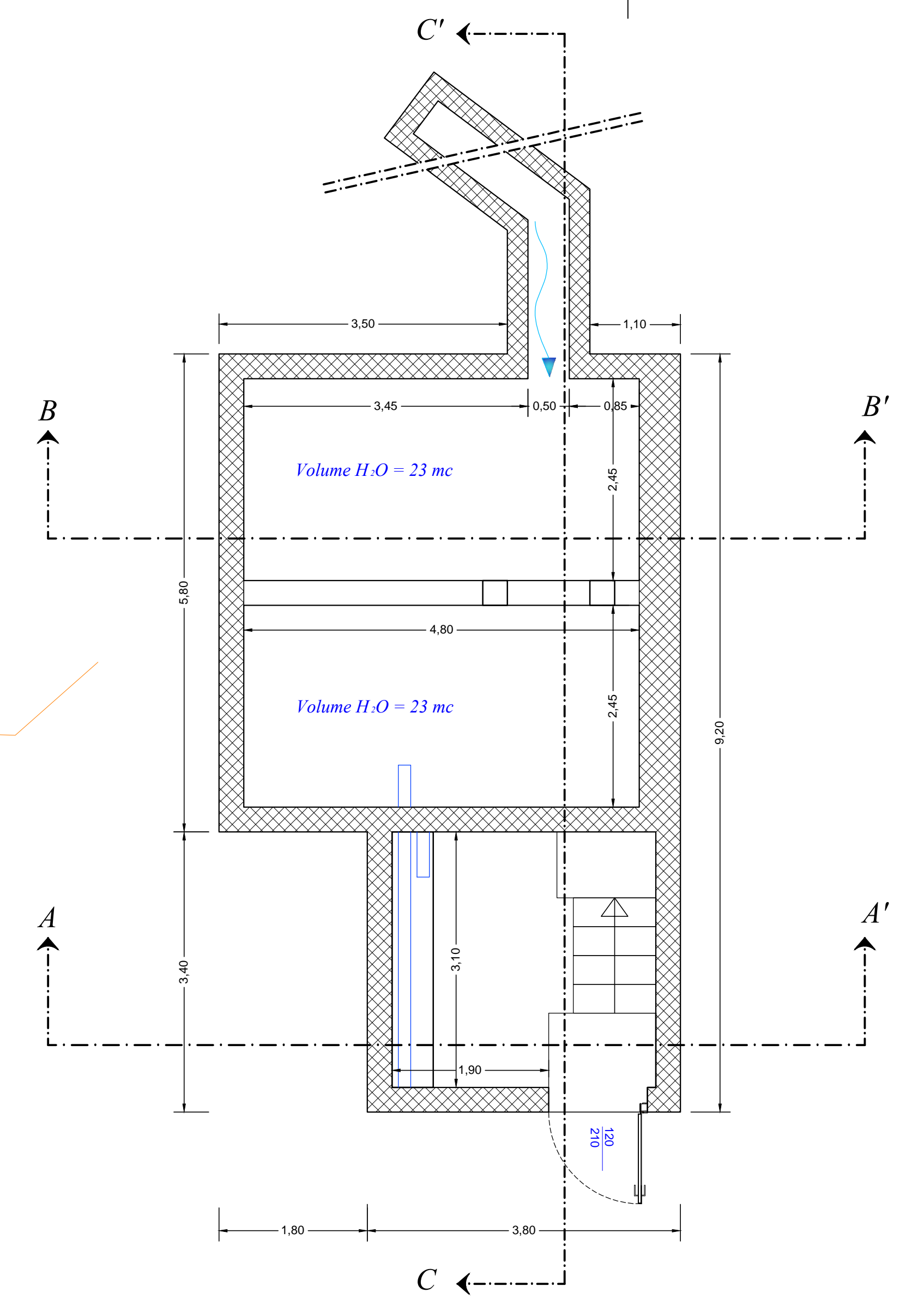
Progetto **DEFINITIVO**

**LAVORI DI ADEGUAMENTO E SISTEMAZIONE DELLE RISORSE IDRICHE DEL COMUNE DI STIO**

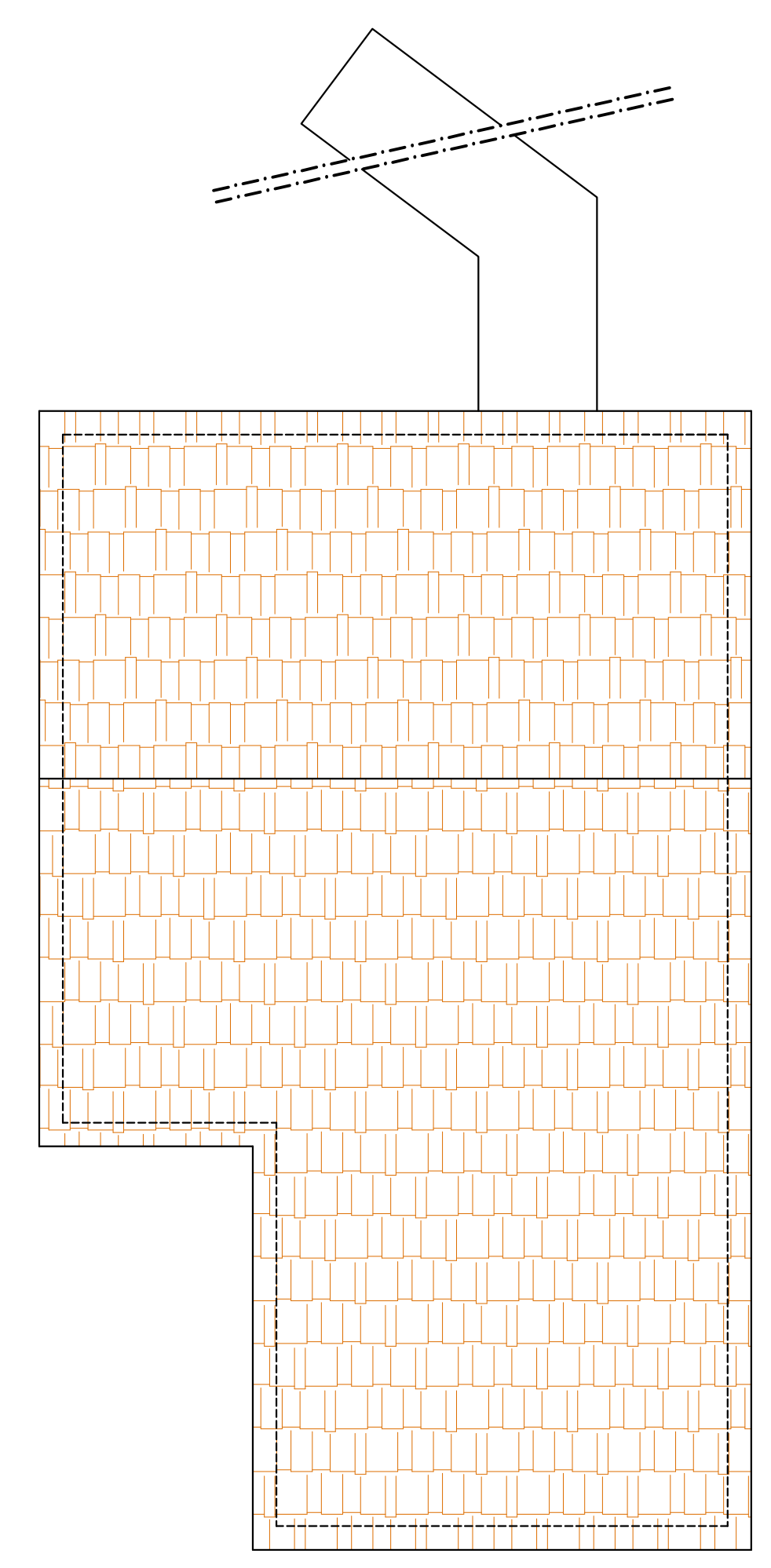
Tavola	Elaborati:	Scala
<b>3.6.2</b>	<b>OPERA DI CAPTAZIONE - Loc. "FOCE TREONI"</b>	1:100
	Planimetria Piante, sezioni e prospetti	1:50
Committente: Amministrazione comunale di STIO		
Progetto: <b>OPERA DI CAPTAZIONE - Loc. "FOCE TREONI"</b>		
Gestione documento:		
Rif. DWG	Disk/Dir	
Approvazione	Data	R.U.P.:
Revisione	Data	
Prot. N°	Data	
Pratica N°	Data	
Copia per:	Data:	



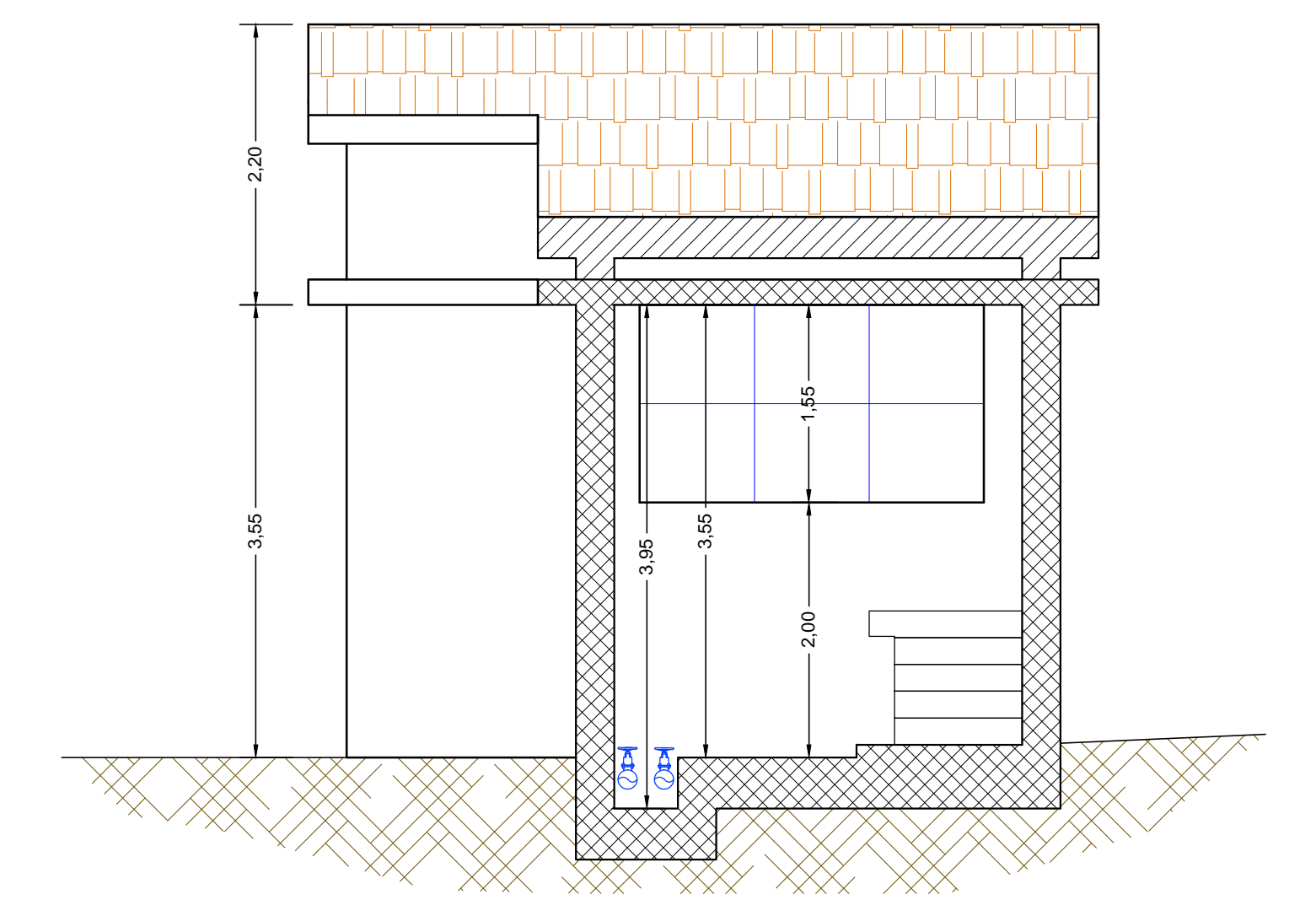
*PLANIMETRIA OPERA DI PRESA  
scala 1:100*



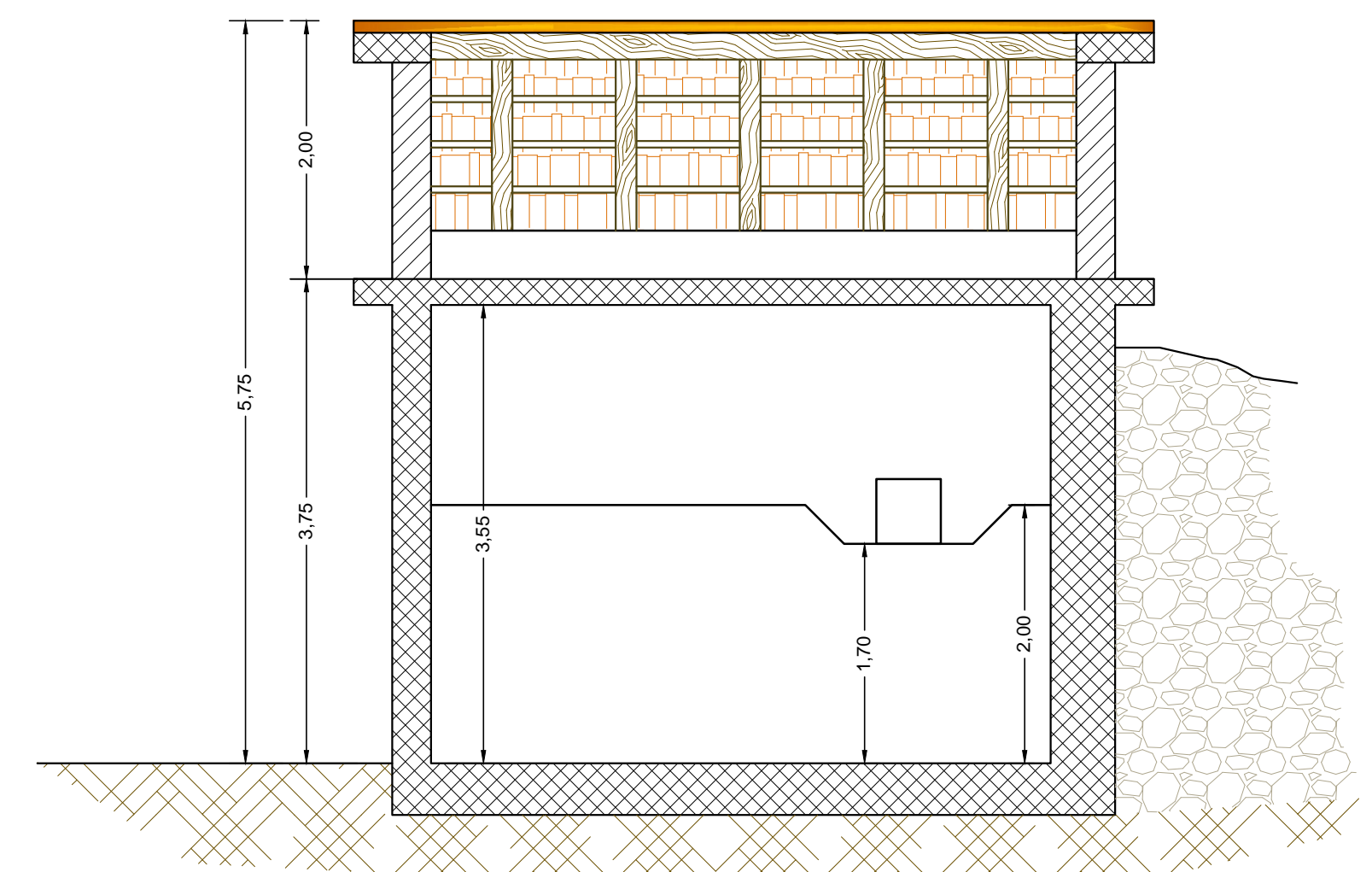
*PIANTA  
scala 1:50*



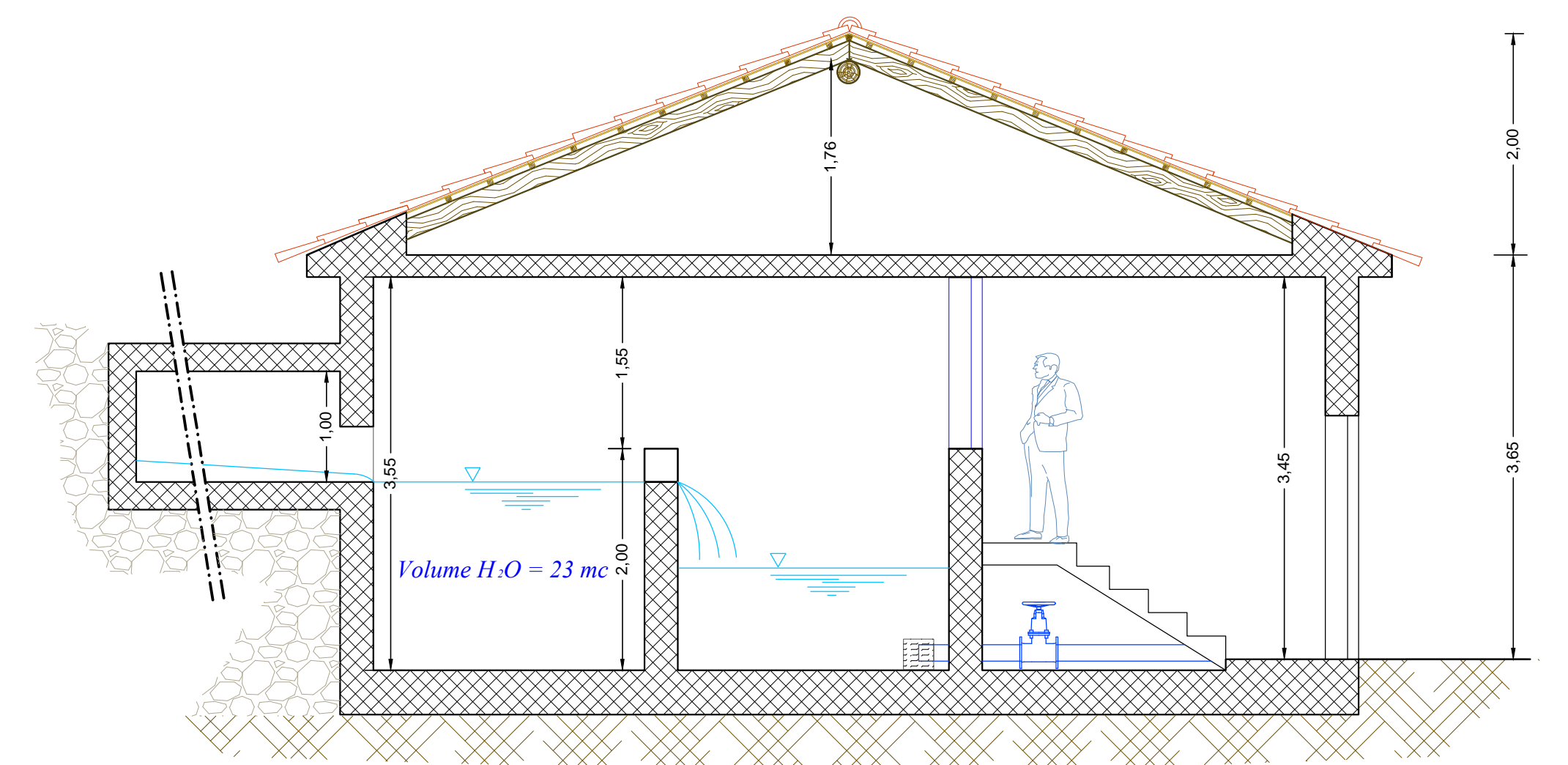
*PIANTA COPERTURA  
scala 1:50*



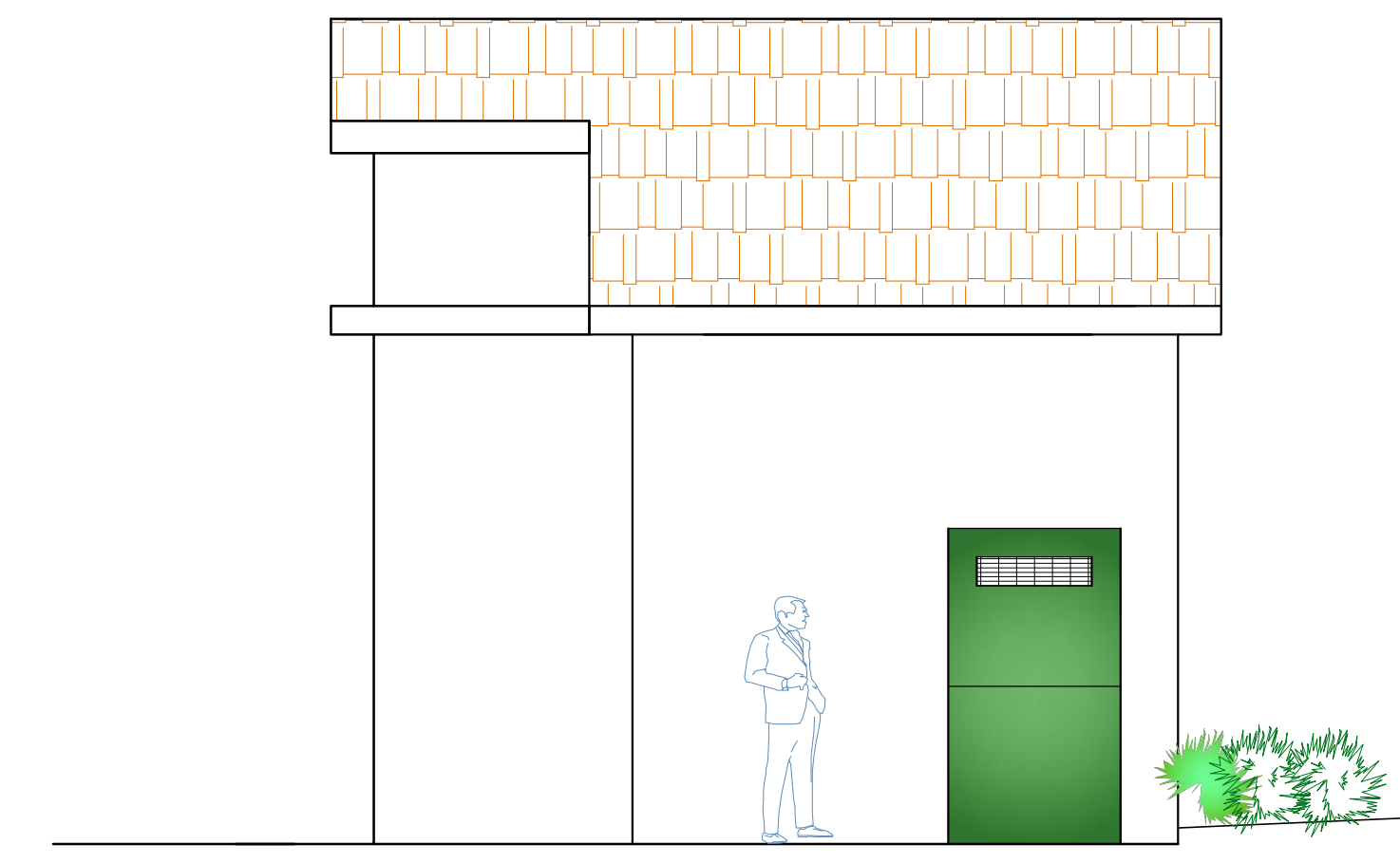
*Sezione A - A'*



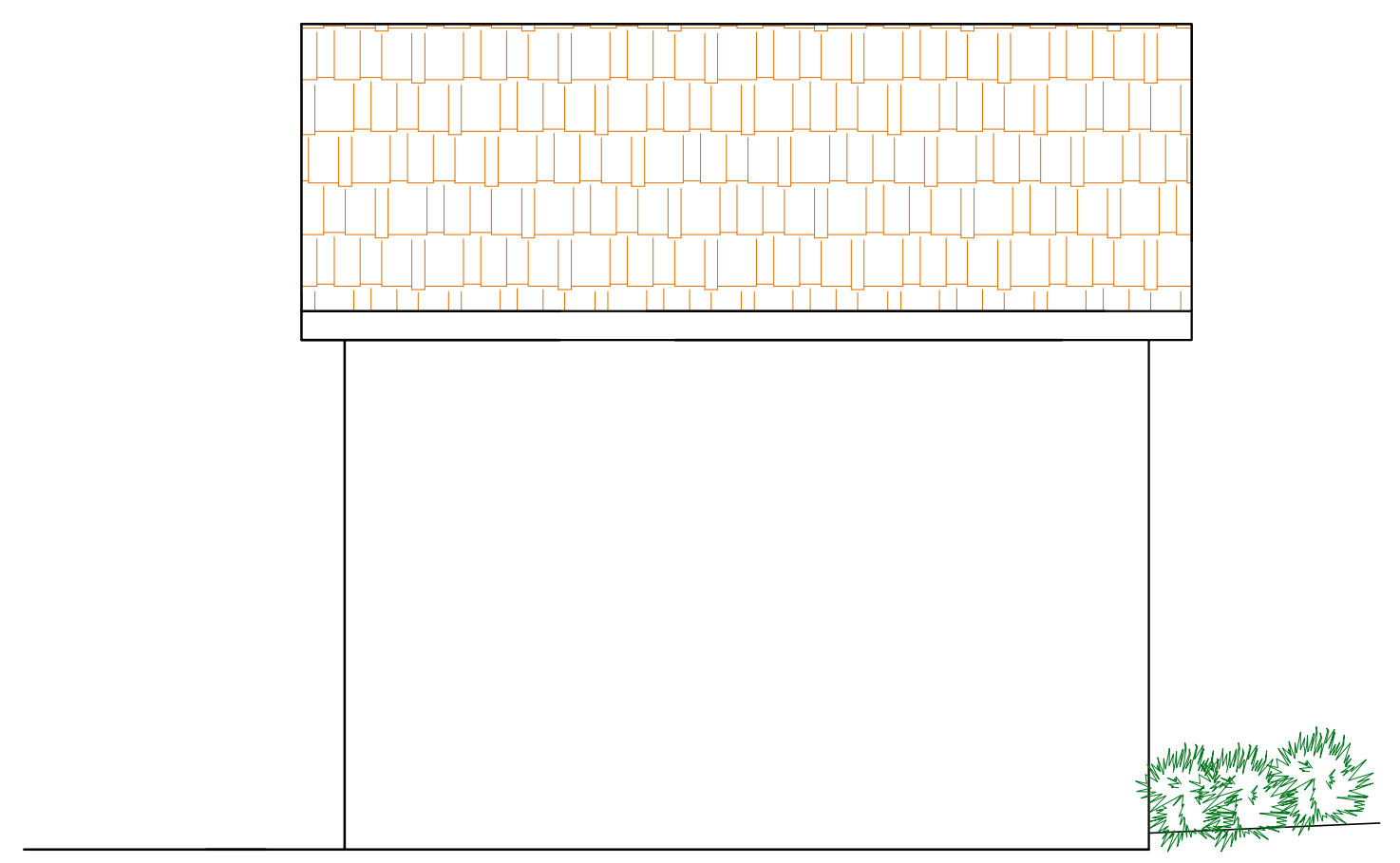
*Sezione B - B'*



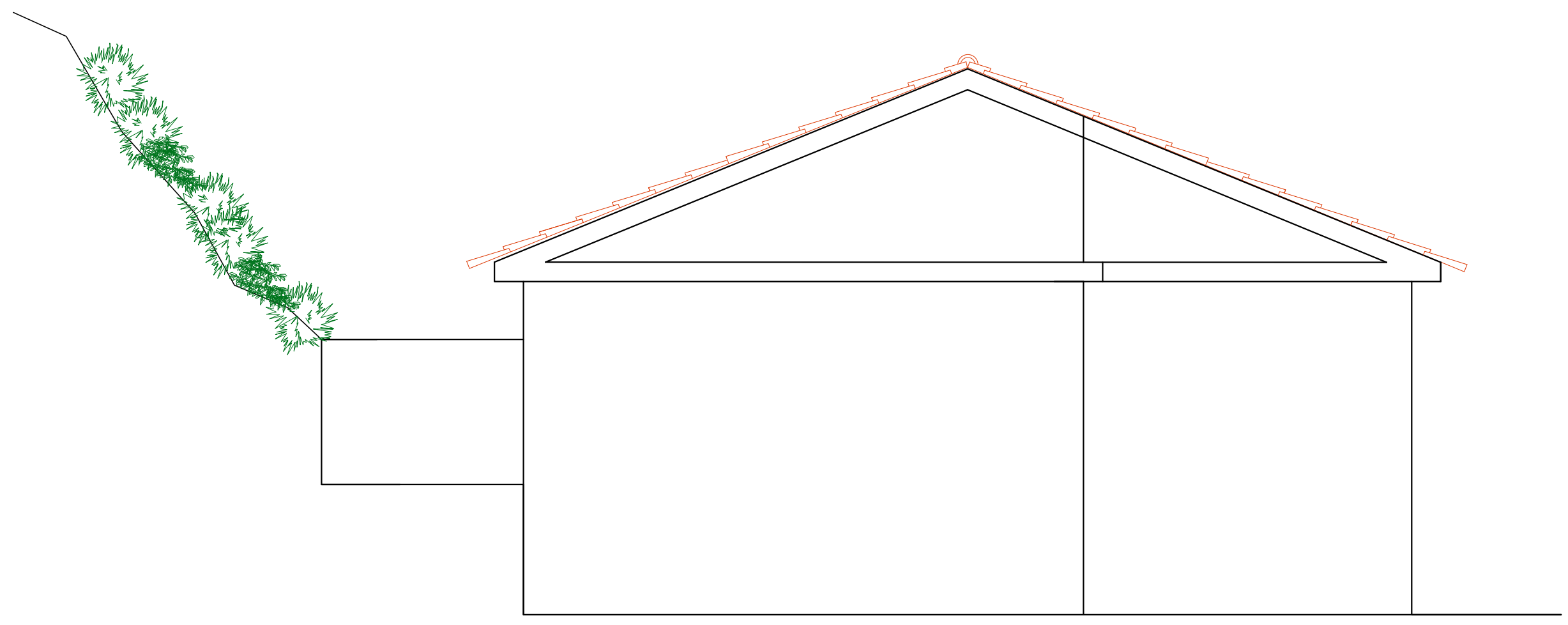
*Sezione C - C'*



*PROSPETTO ANTERIORE  
scala 1:50*



*PROSPETTO POSTERIORE  
scala 1:50*



*PROSPETTO LATERALE  
scala 1:50*