

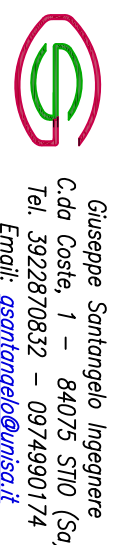


Progetto DEFINITIVO

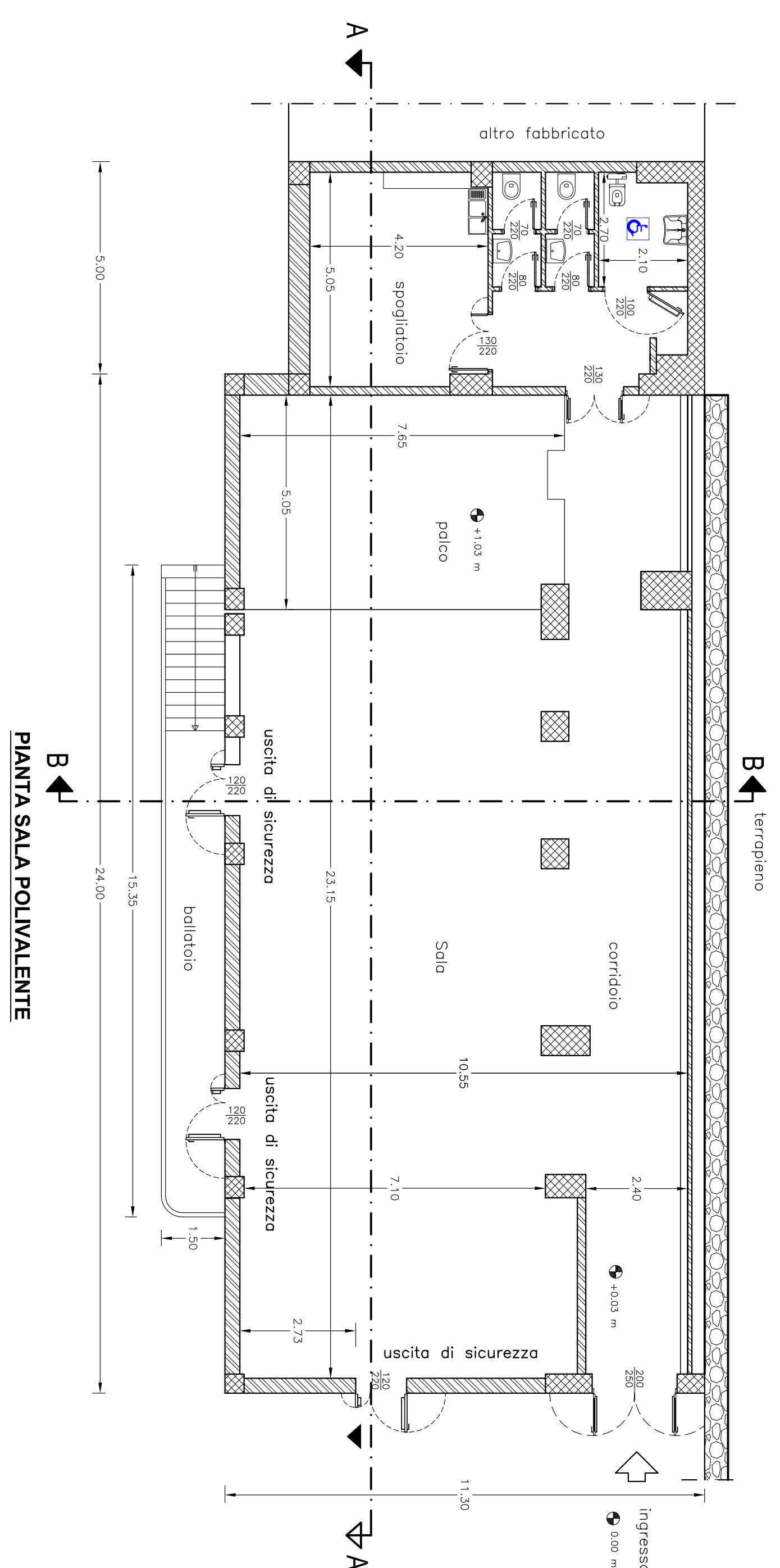
LAVORI DI SISTEMAZIONE ED ADEGUAMENTO SALA POLIVALENTE DEL CAPOLUOGO

Tavola	Endovoli	Scala
3	PROGETTO	1:100
	Plante e sezioni	1:100
	Prospetti	1:10 - 1:20
	Particolari costruttivi	

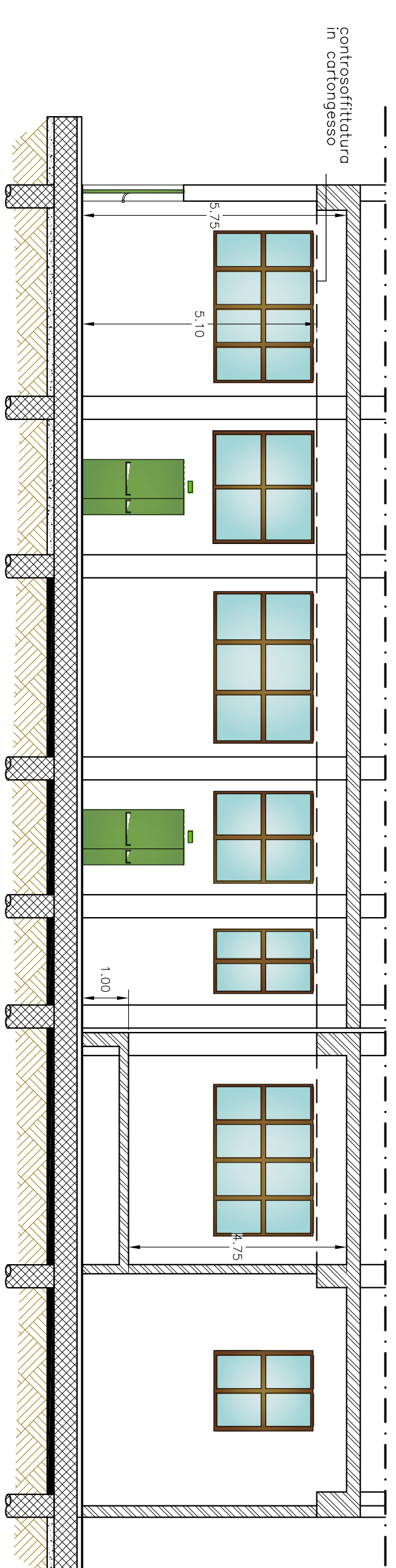
Comittente:	Amministrazione comunale di STIO	Progettista:	Ing. Giuseppe SANTANGELO
Redazione documento:	Ing. Giuseppe SANTANGELO	Responsabile sicurezza:	Ing. Giuseppe SANTANGELO
Autore:	Ing. Giuseppe SANTANGELO	R.U.P.:	Geom. Stefano TROTTA
Revisione:	Ing. Giuseppe SANTANGELO		
Primo N°:	Ing. Giuseppe SANTANGELO		
Secondo N°:	Ing. Giuseppe SANTANGELO		
Terzo N°:	Ing. Giuseppe SANTANGELO		
Quarto N°:	Ing. Giuseppe SANTANGELO		
Quinto N°:	Ing. Giuseppe SANTANGELO		
Costo per:			



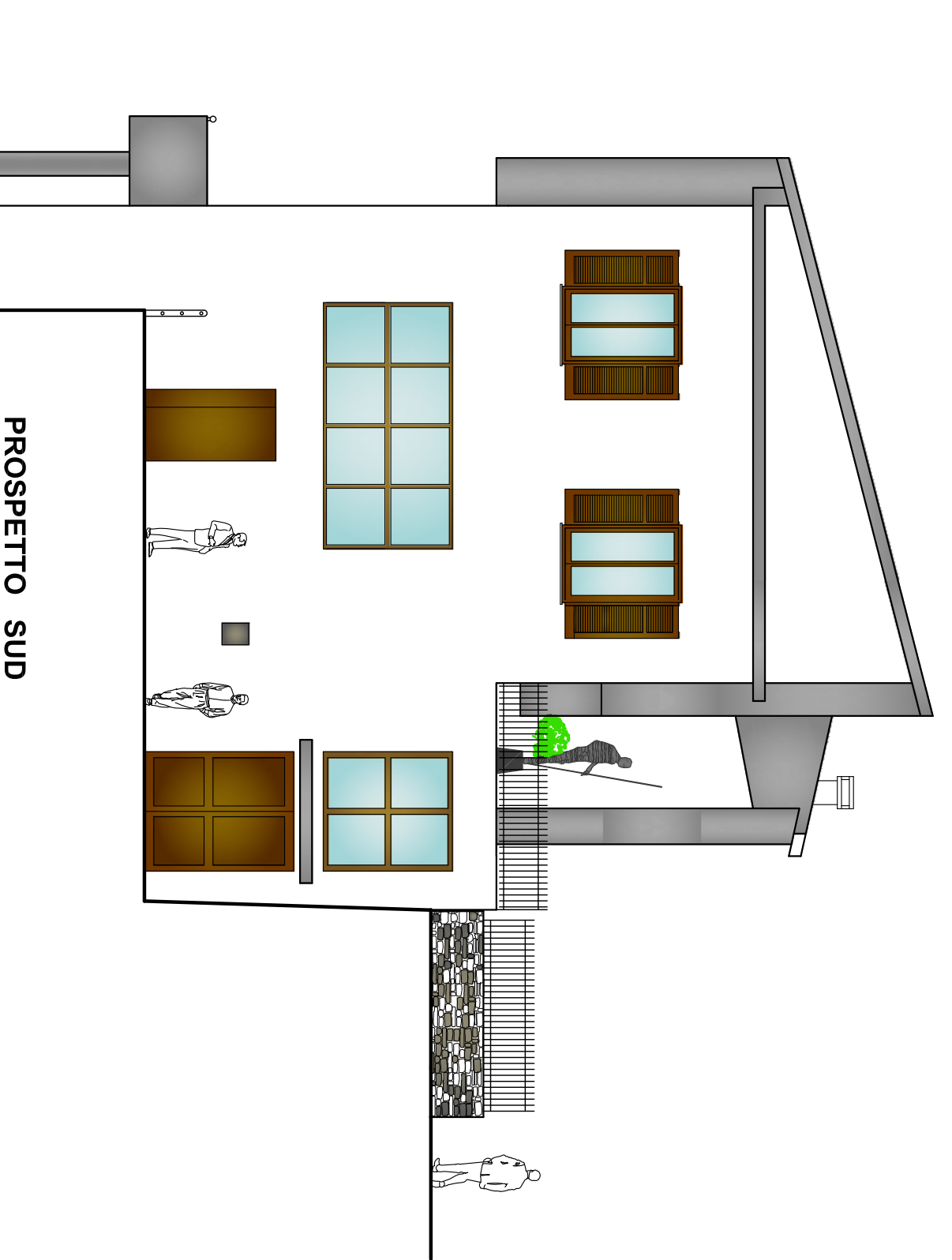
Gruppo Sviluppo Supporto
Via S. Maria 10, 84025 STIO (SA)
Tel. 081/84025111
Email: sviluppo@svilupposupporto.it



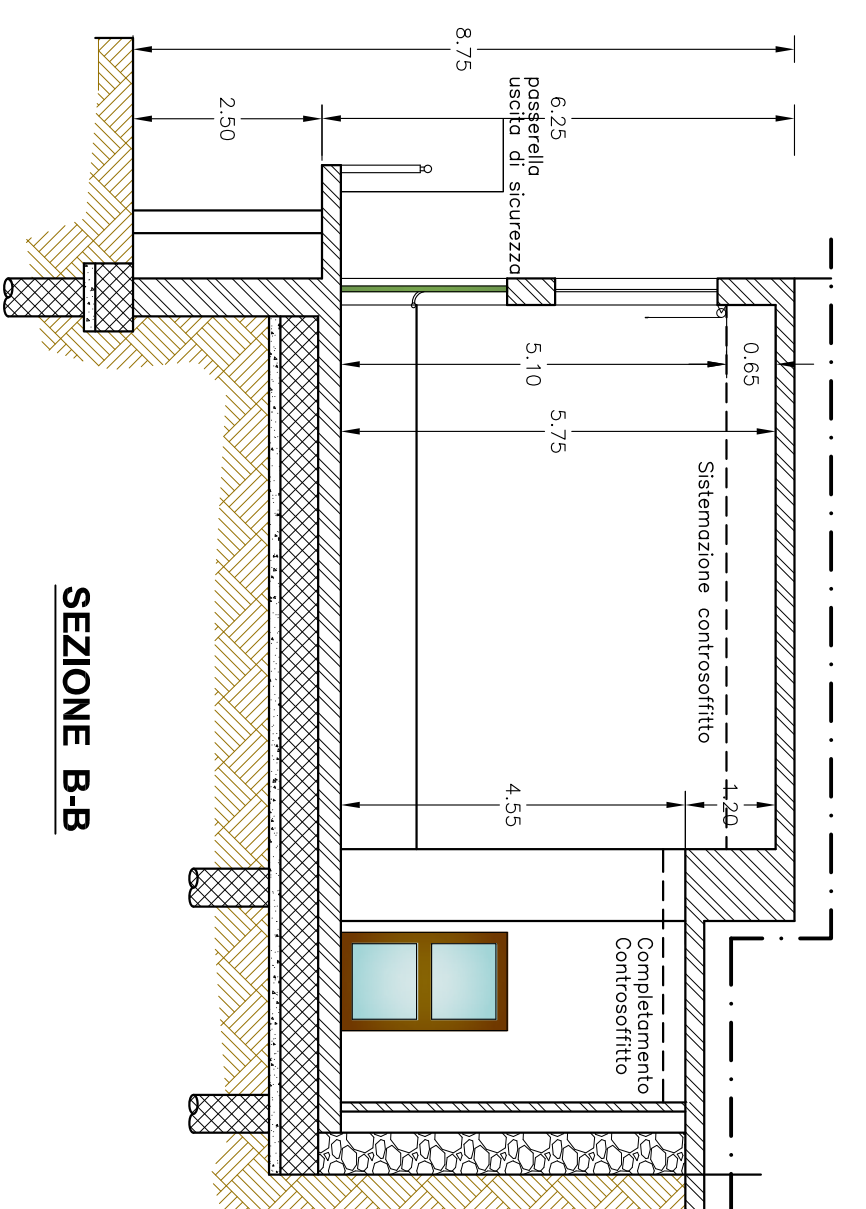
PIANTA SALA POLIVALENTE



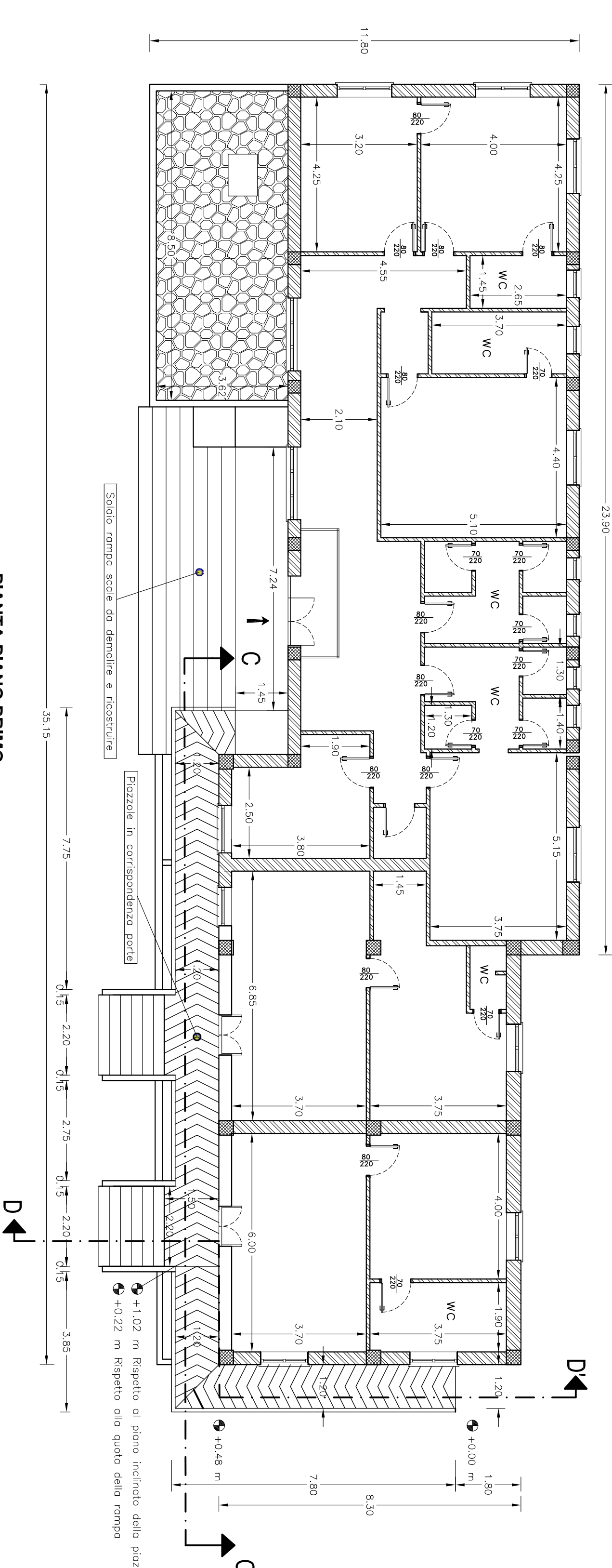
SEZIONE AA



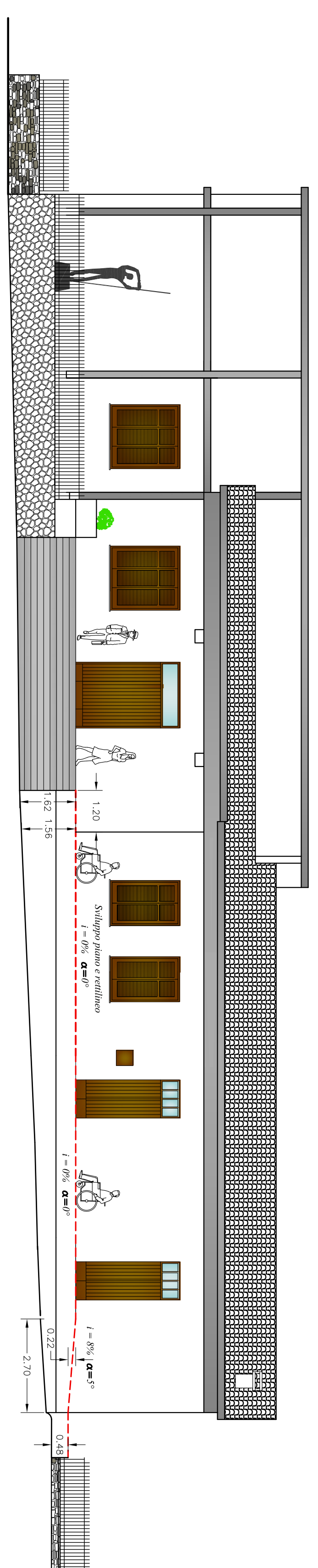
PROSPETTO SUD



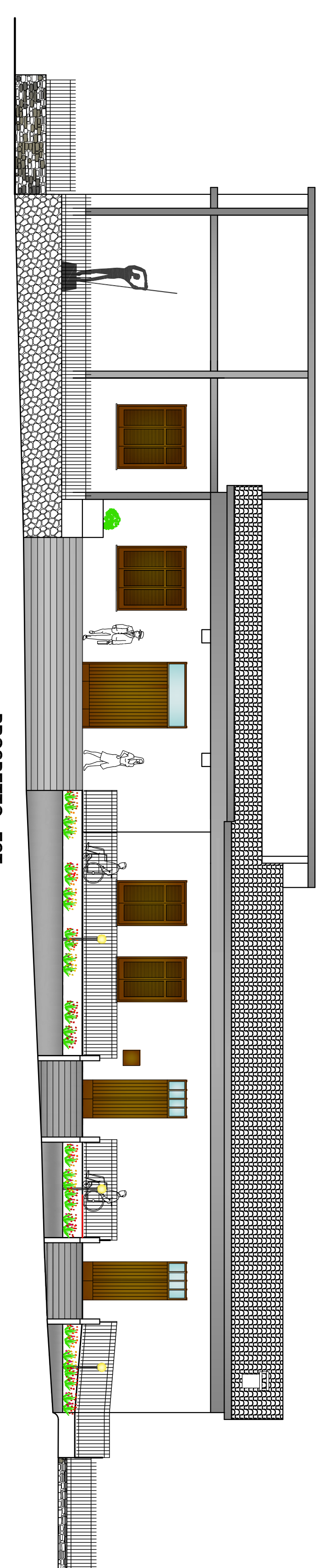
SEZIONE B-B



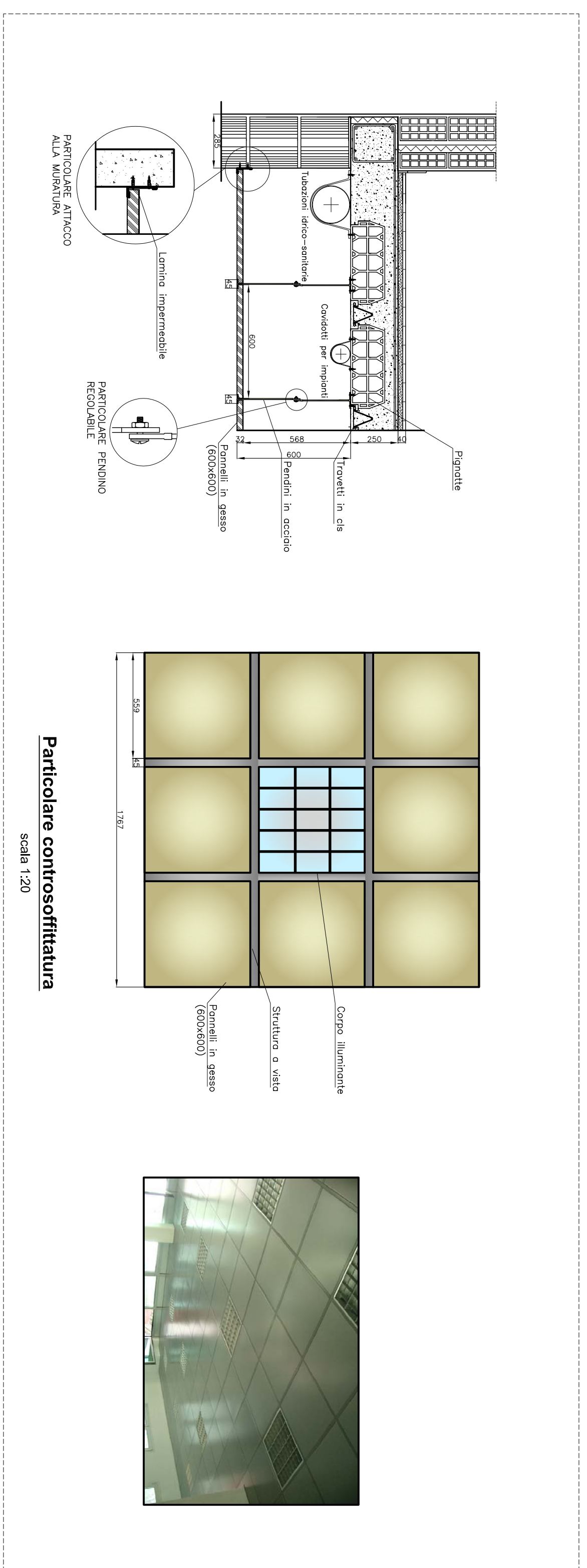
PIANTA PIANO PRIMO



SEZIONE C-C

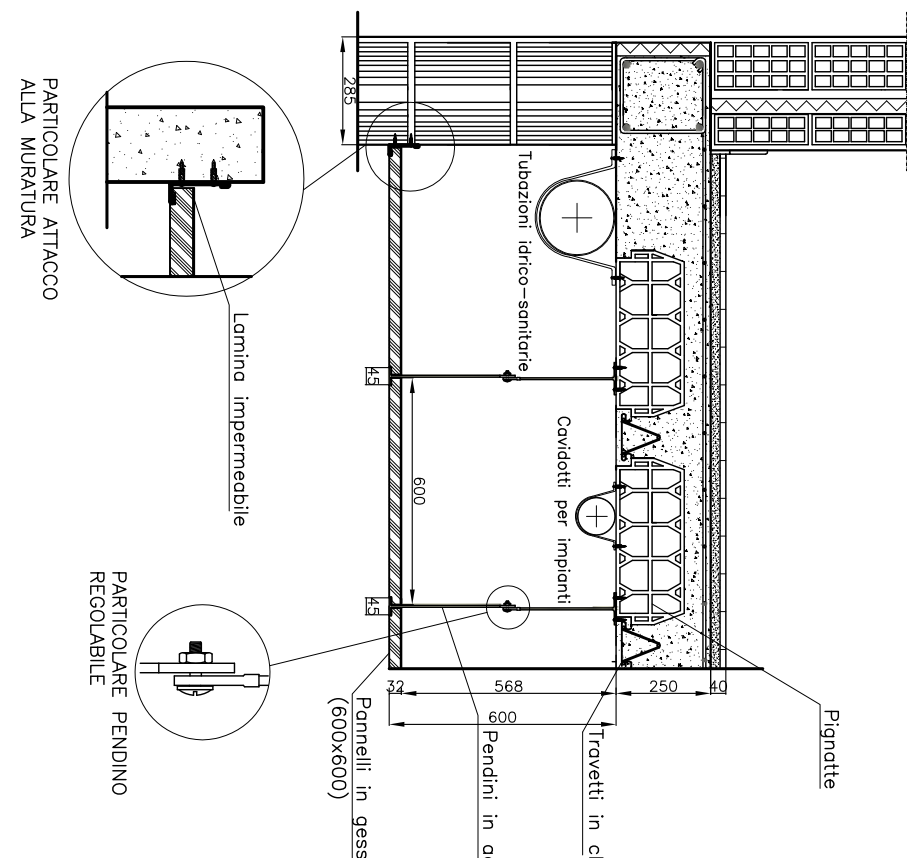


PROSPETTO EST



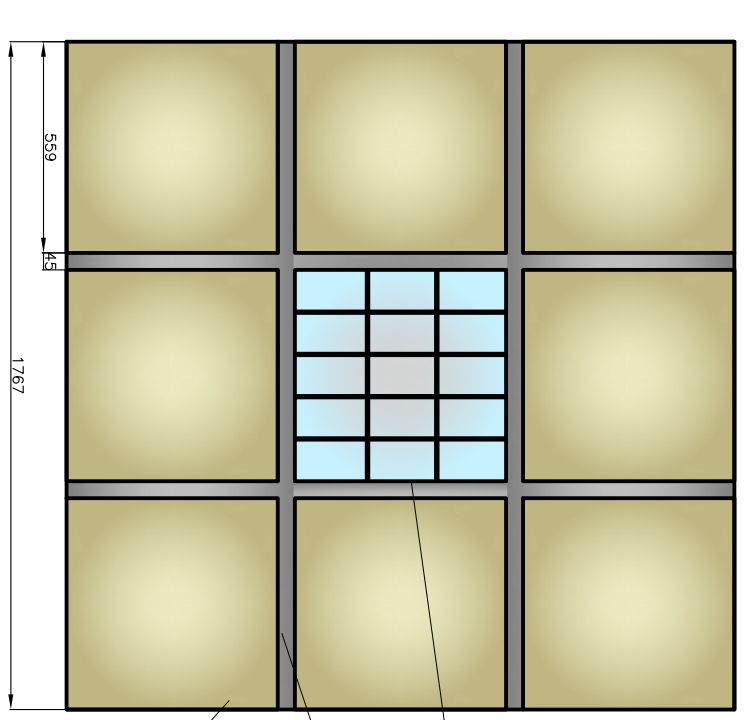
Particolare controsoffittatura

scala 1:20

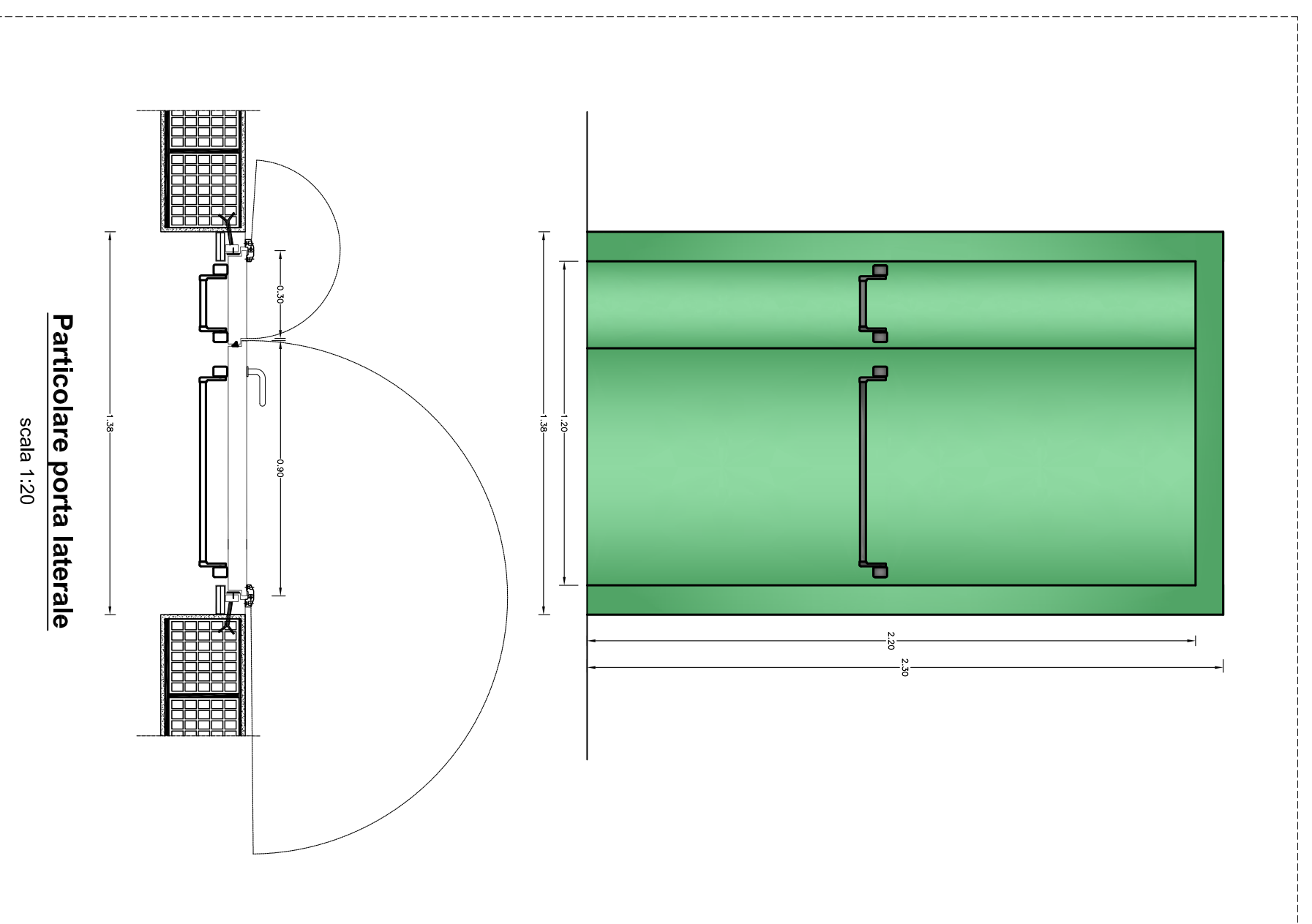


Particolare attacco ALU. tendine

Particolare attacco Particolare finestra

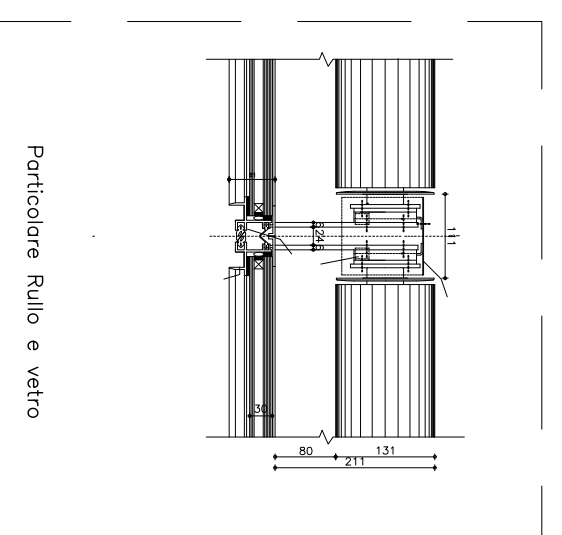
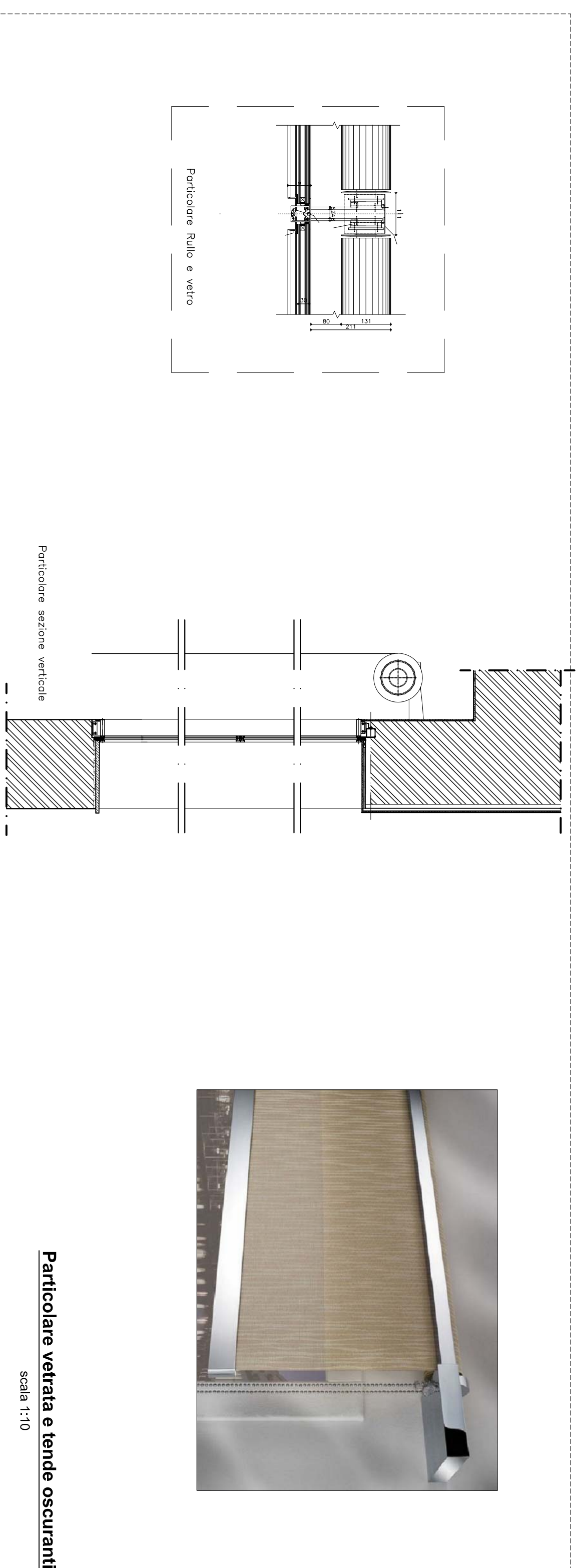


Particolare vetrata e tende oscuranti



Particolare porta laterale

scala 1:20

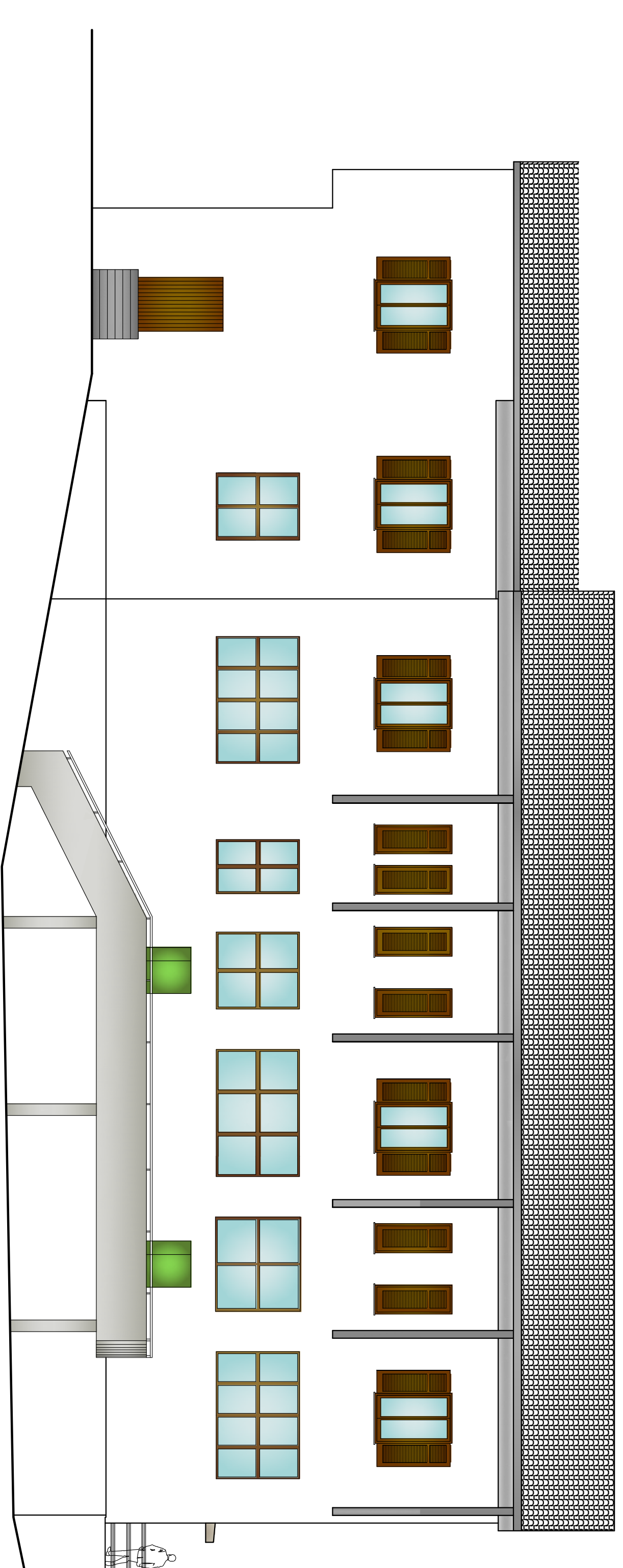


Particolare vetrata e tende oscuranti

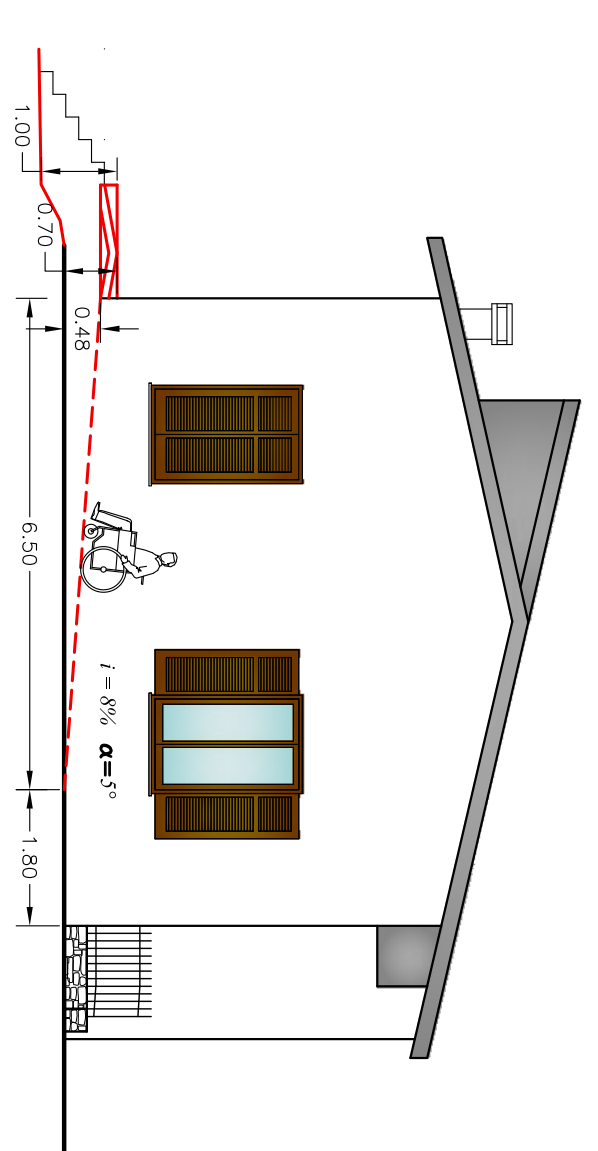


Particolare vetrata e tende oscuranti

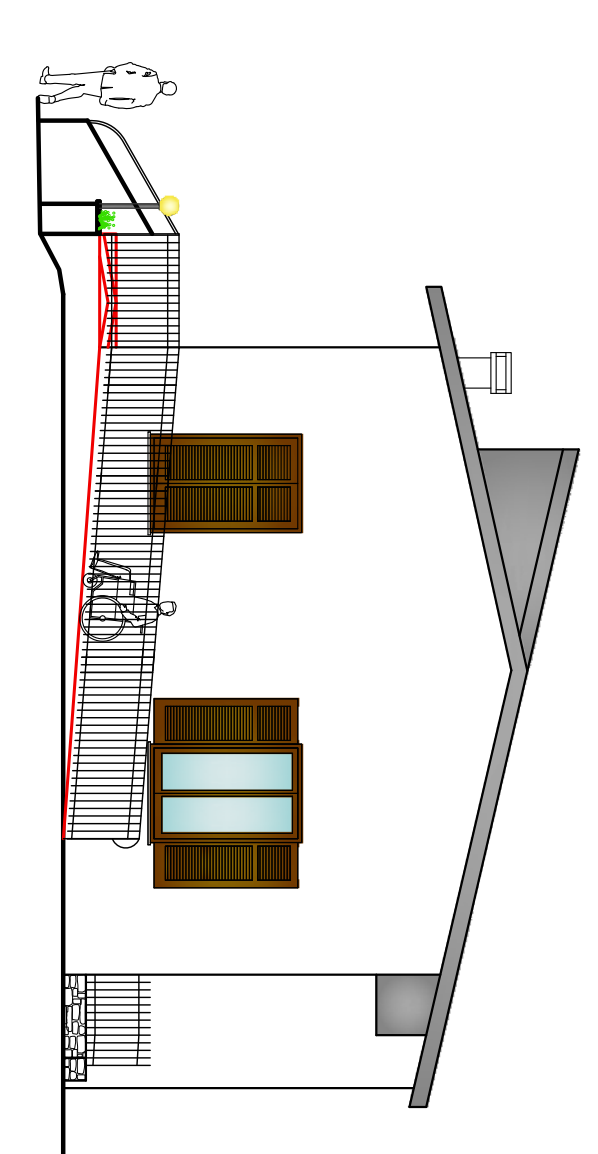
scala 1:10



PROSPETTO OVEST



SEZIONE D-D



PROSPETTO NORD