

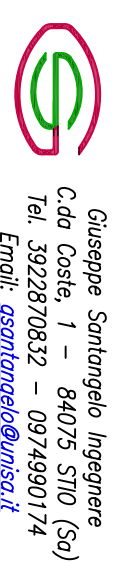


Progetto DEFINITIVO

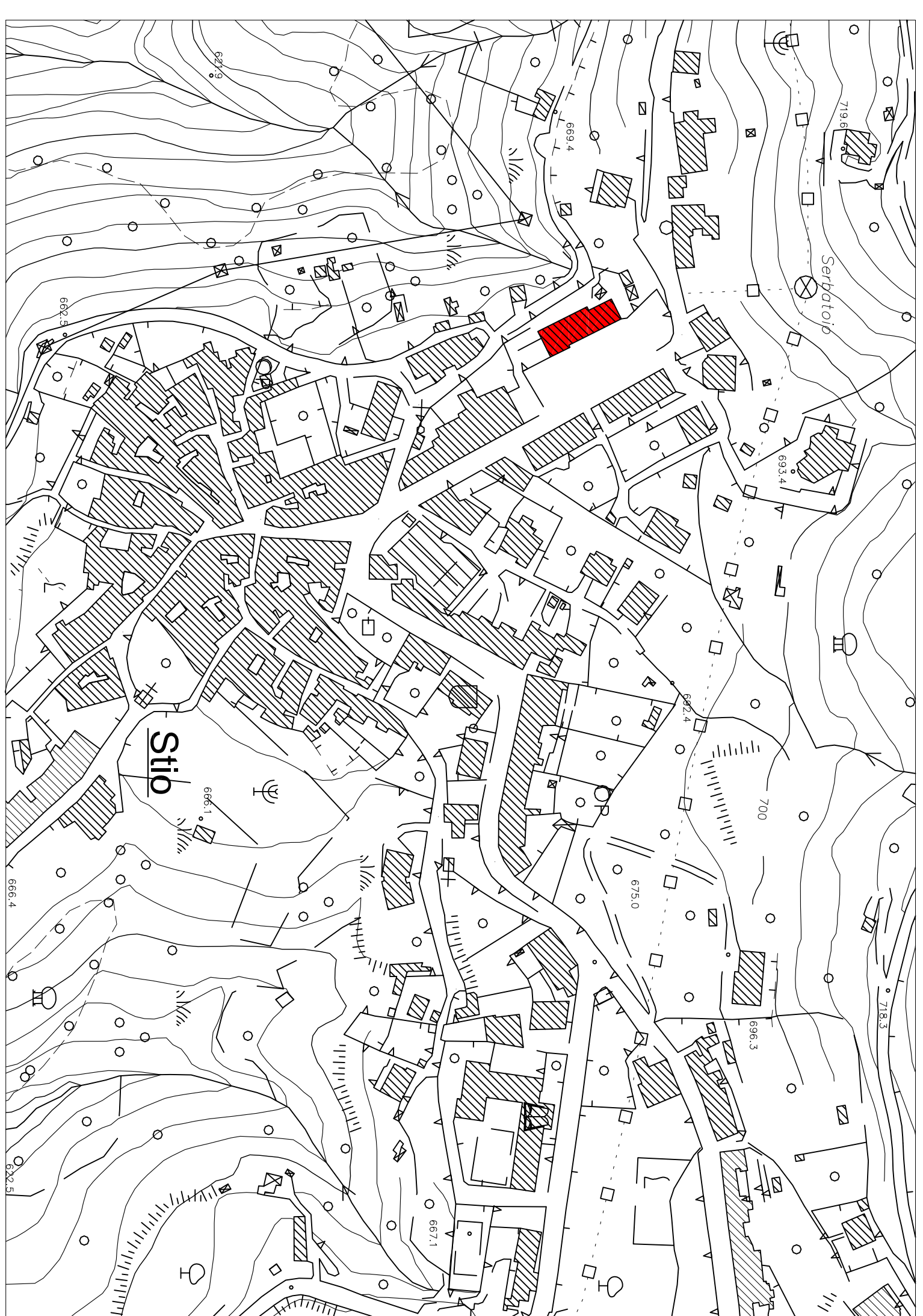
LAVORI DI SISTEMAZIONE ED ADEGUAMENTO SALA POLIVALENTE DEL CAPOLUOGO

Tavola	Edificatori	Scopo
2	STATO DI FATTO	1:1000
	Inquadramento territoriale	1:2000
	Piante e sezioni	1:100
	Prospetti	1:100

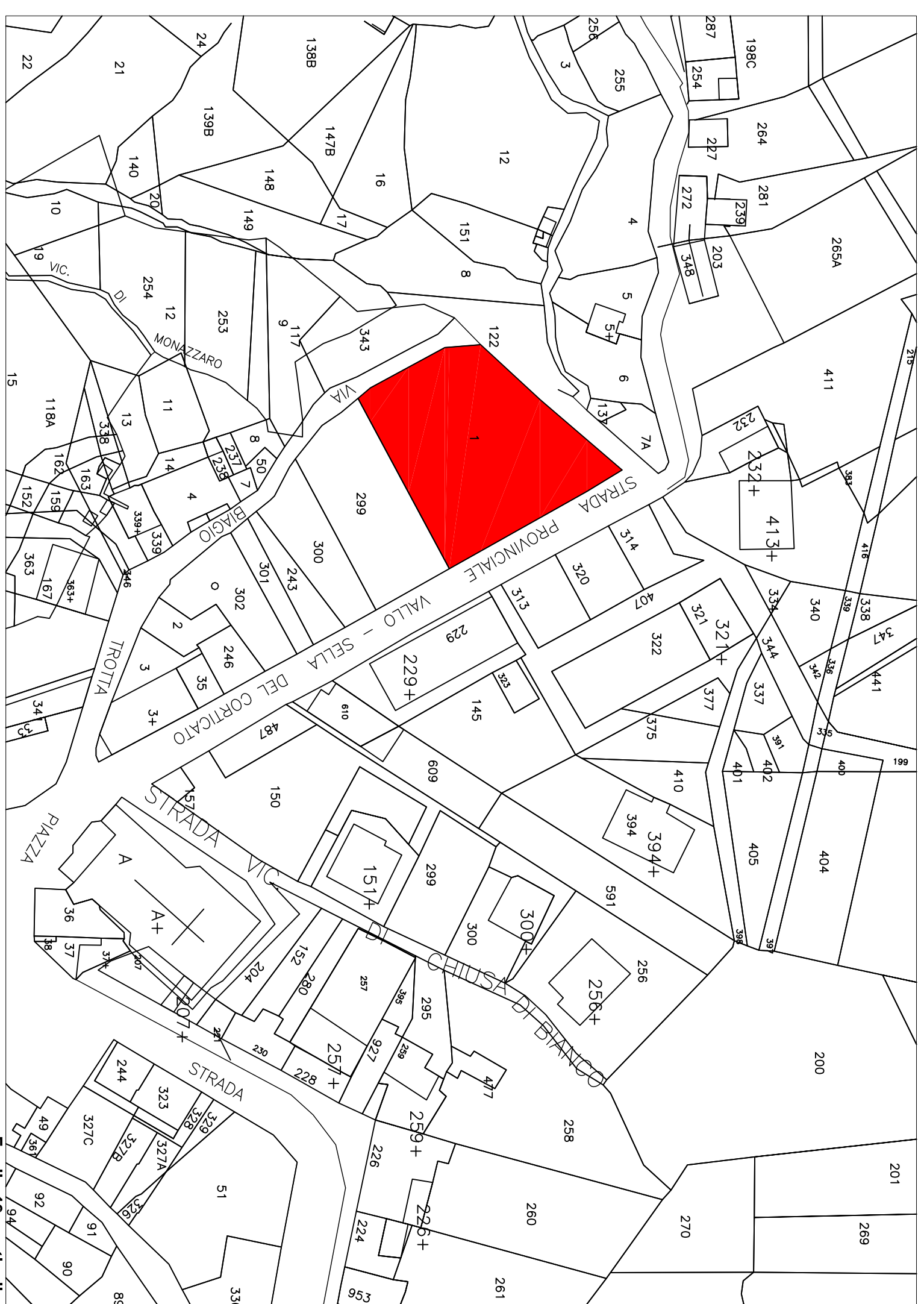
Comittente:	Amministrazione comunale di STIO	Progettista:	Ing. Giuseppe SANTANGELO
Dir. NRG:	Giuseppe Santangelo	Responsabile sicurezza:	Ing. Giuseppe SANTANGELO
Revisione:	Stio	Profilo:	R.417
Pratica N°:	Stio	DATA:	Giugno 2014
Costo per:	Stio		



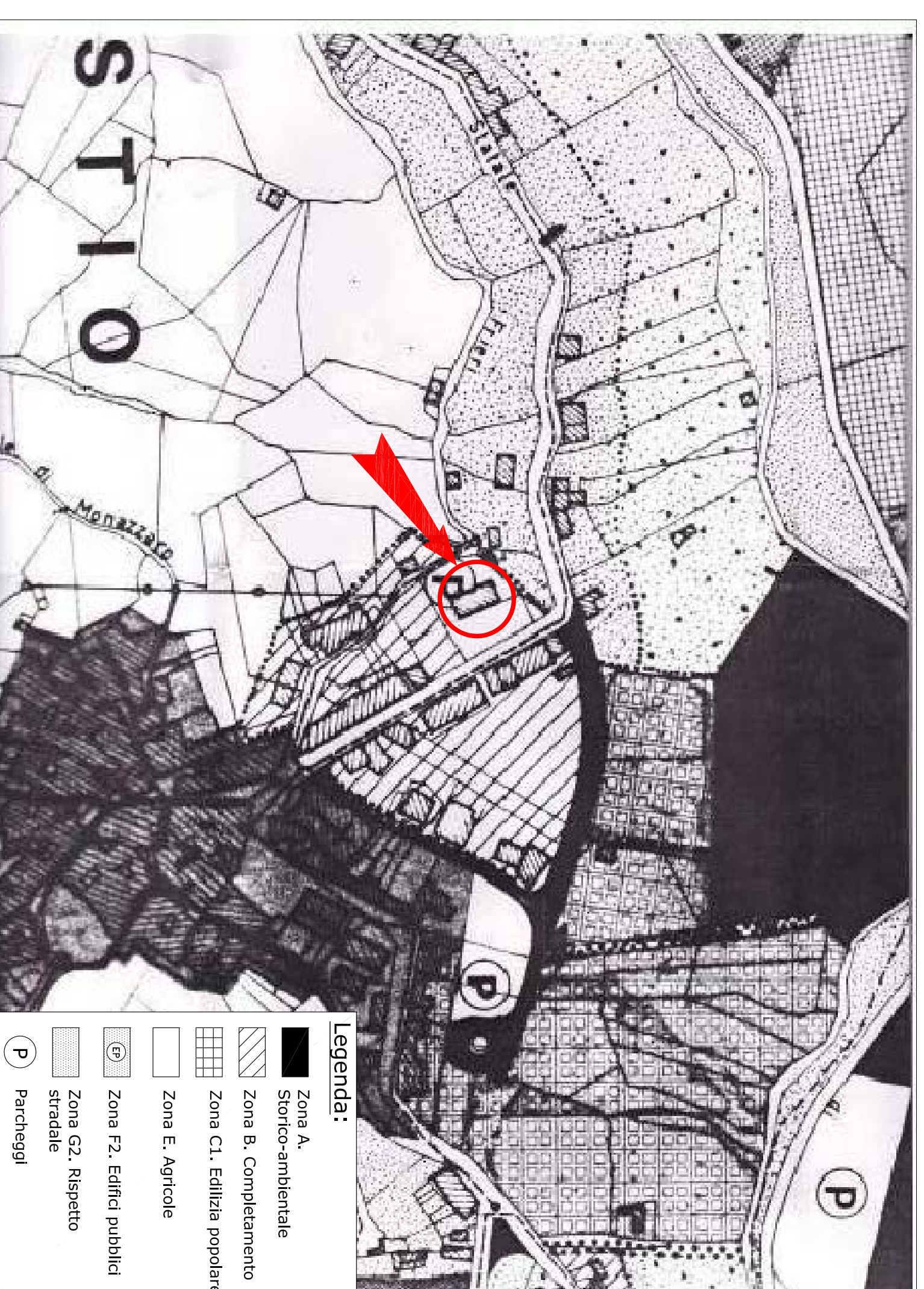
Gruppo Sviluppo Supporti  
Via S. Maria 13 - 84025 STIO (SA)  
Tel. 081/84025111 - Fax 081/84025112  
E-mail: [sviluppo@sviluppo.it](mailto:sviluppo@sviluppo.it)



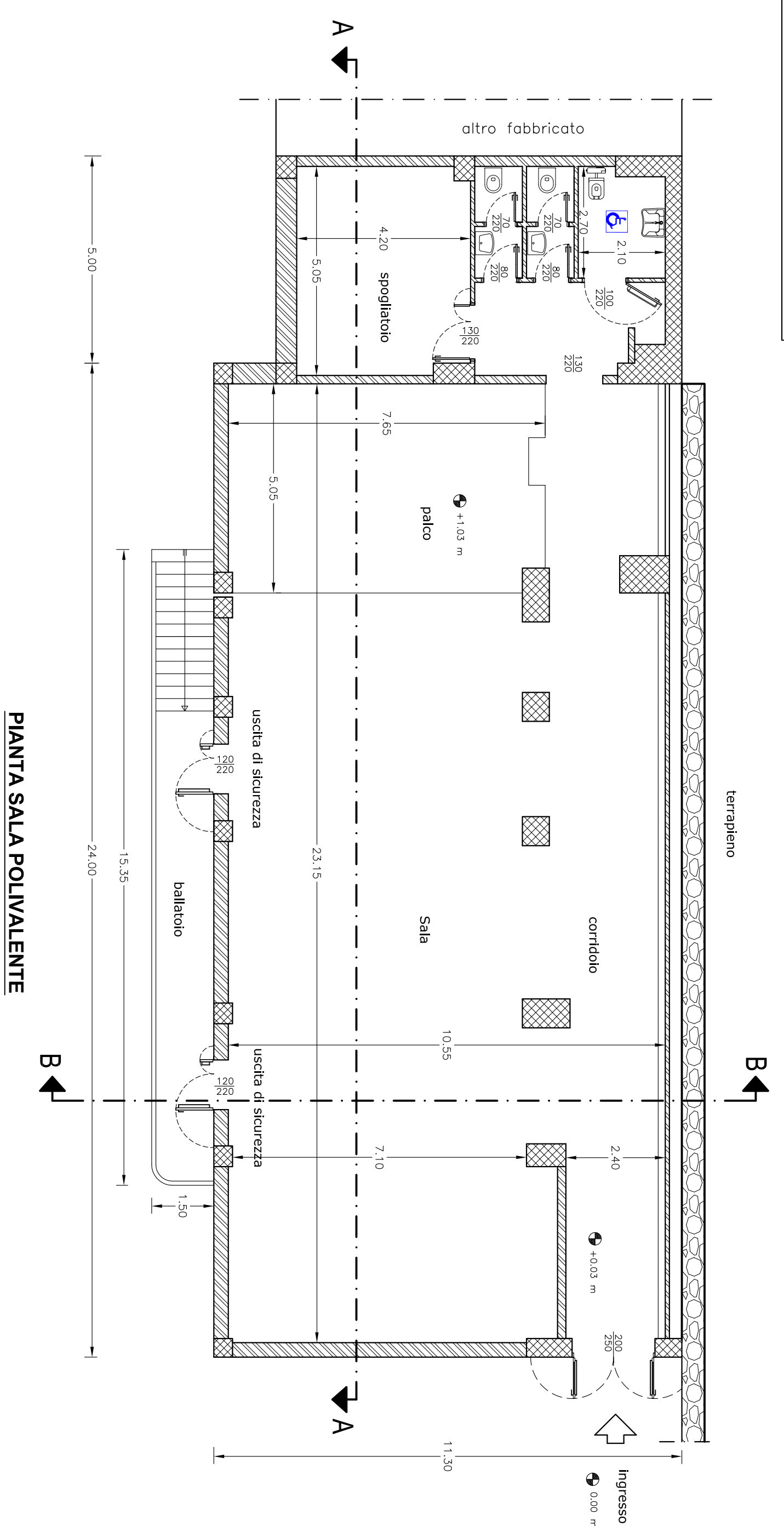
STRALCIO AEROFOTOGRAFOMETRICO scala 1:2000



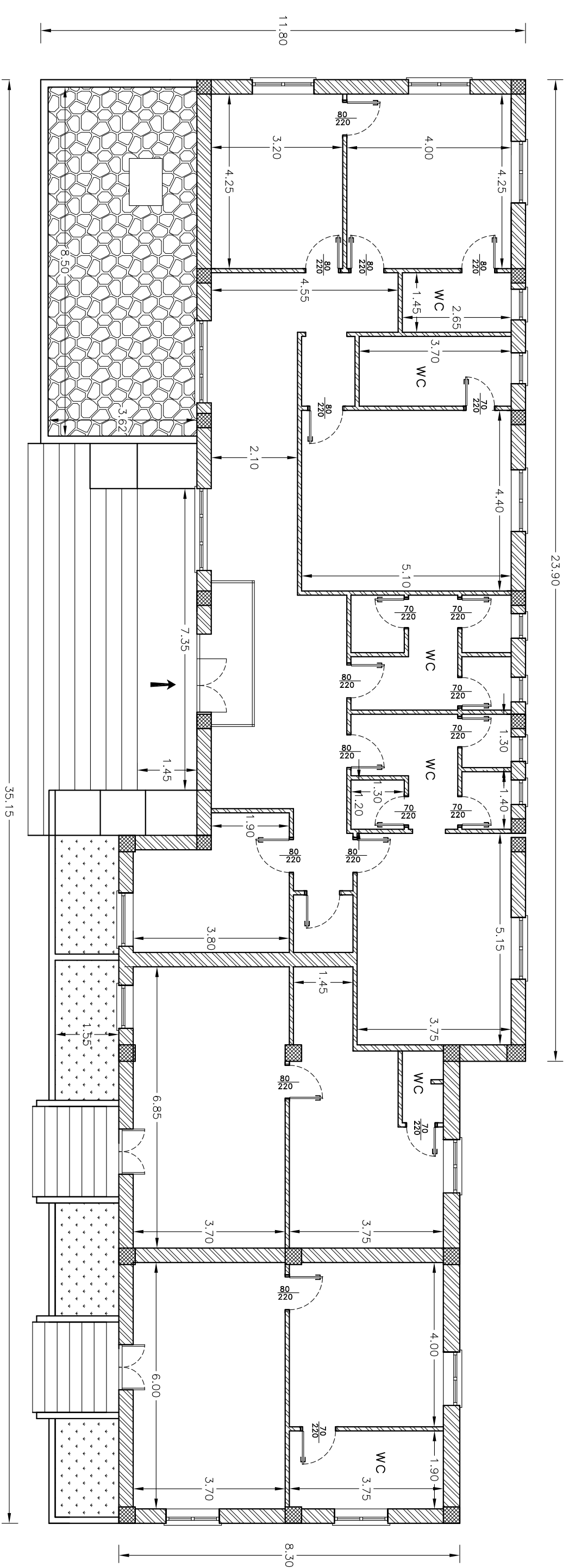
PLANIMETRIA CATASTALE scala 1:1000



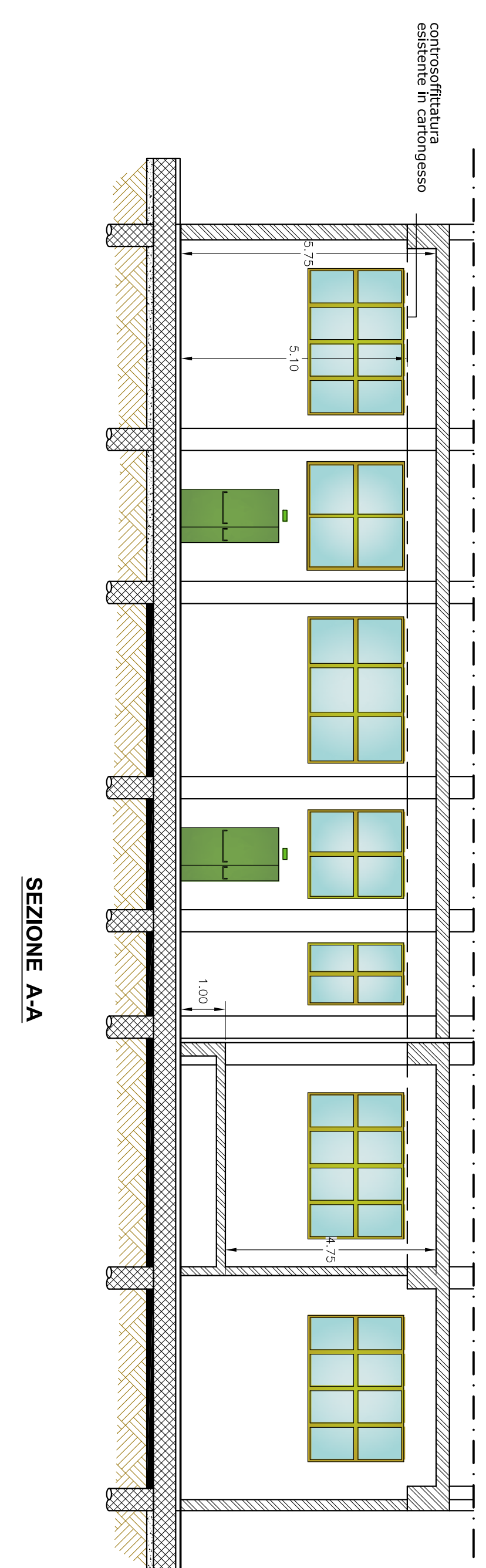
STRALCIO P.R.G. scala 1:2000



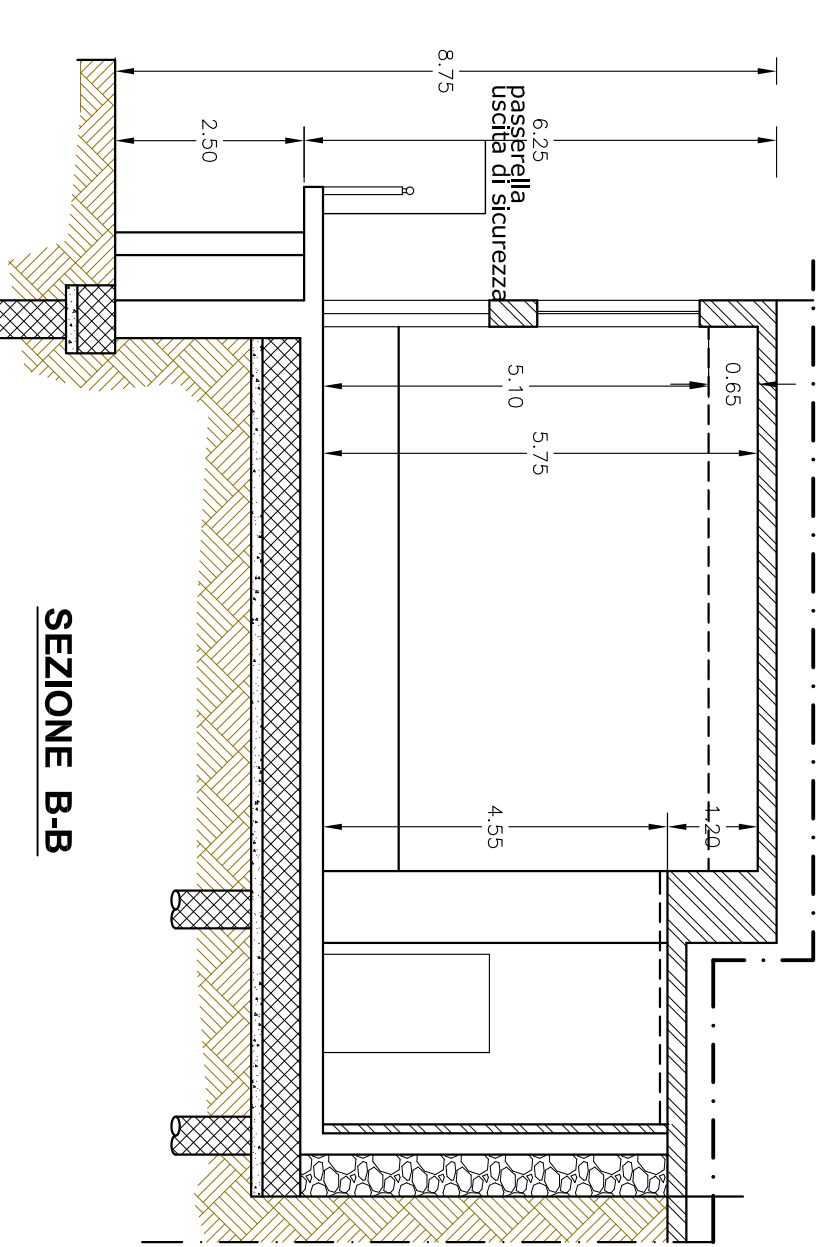
PIANTA SALA POLIVALENTE



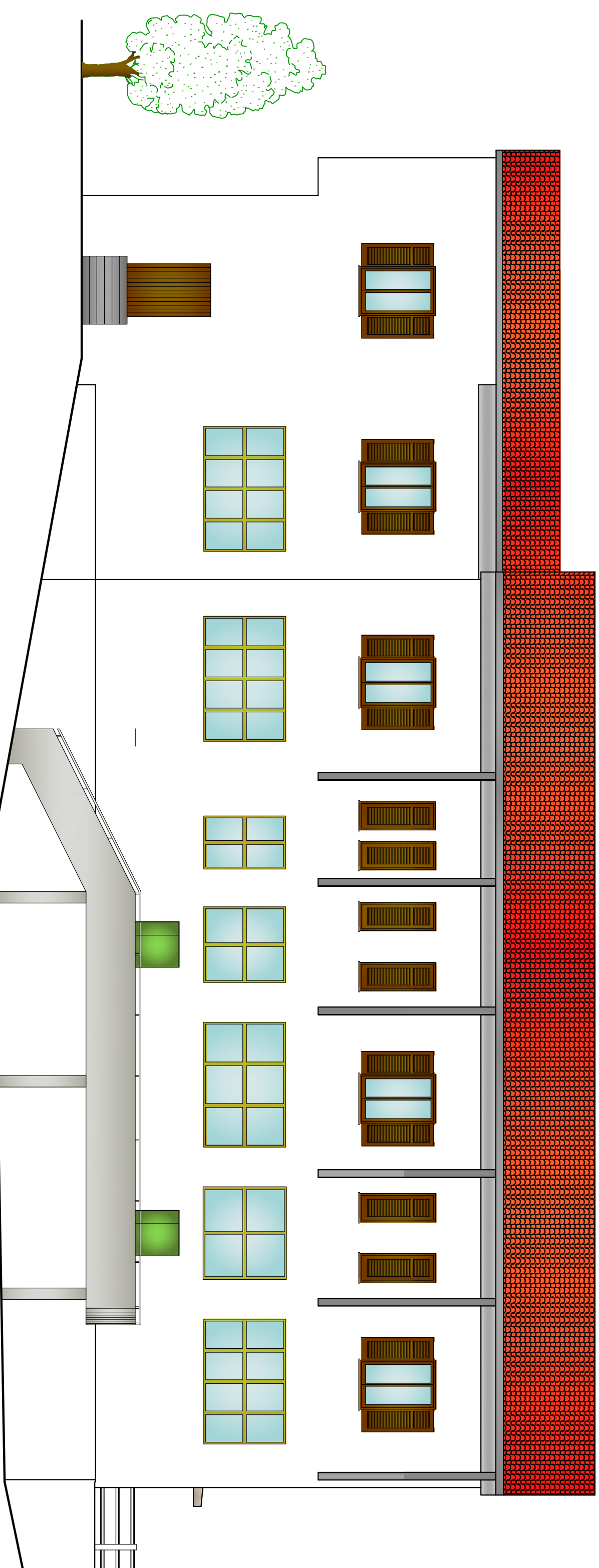
PIANTA PIANO PRIMO



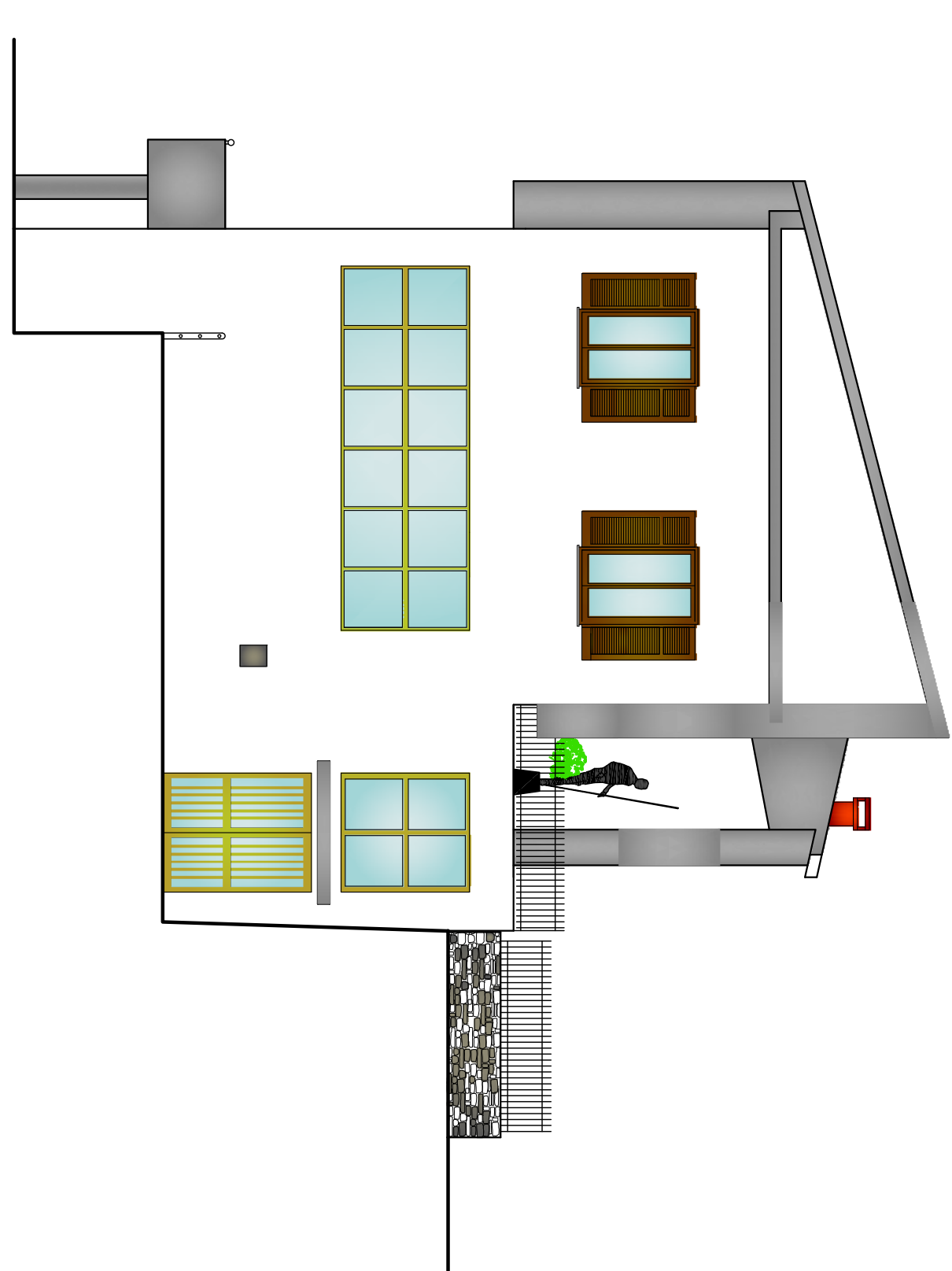
SEZIONE A-A



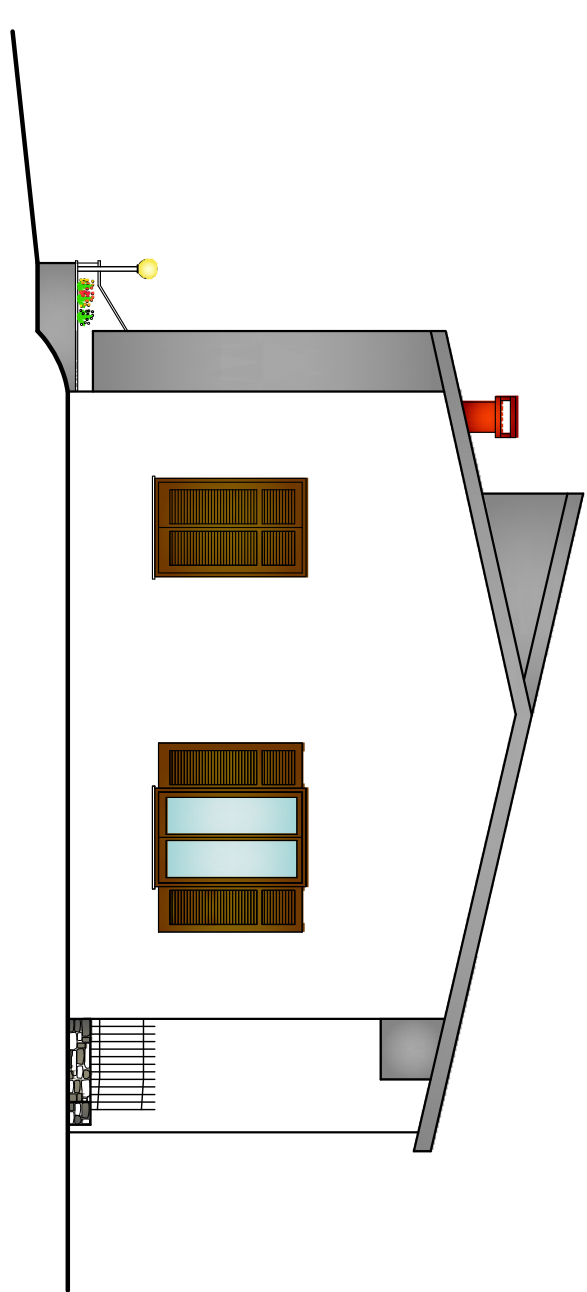
SEZIONE B-B



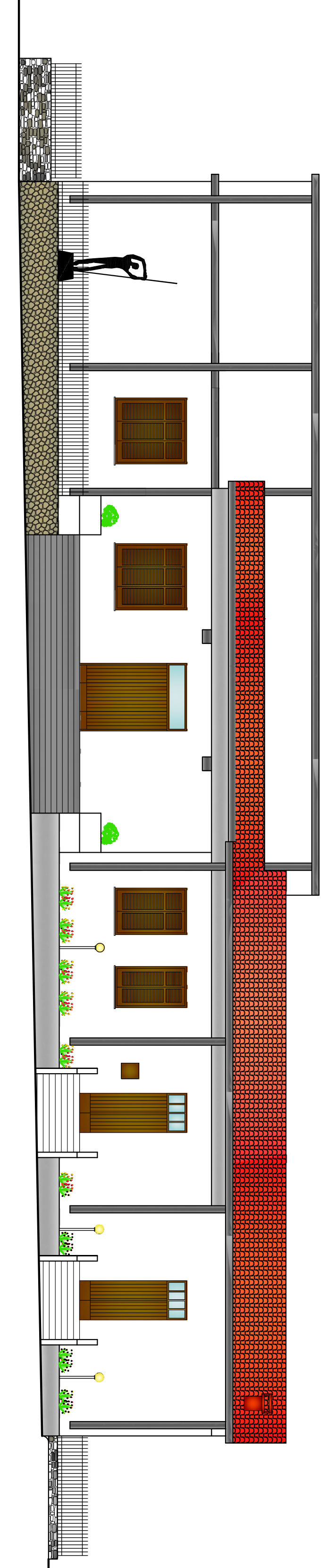
PROSPETTO OVEST



PROSPETTO SUD



PROSPETTO NORD



PROSPETTO OVEST