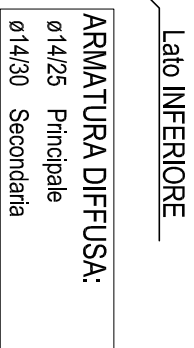
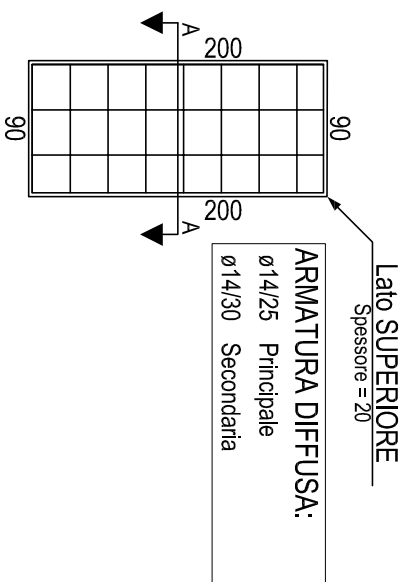
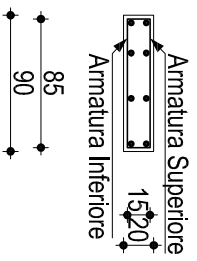


# PLATEA 1

Piano Terra

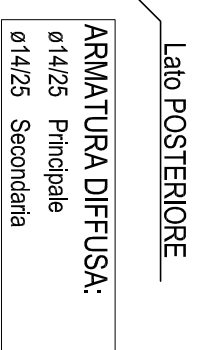
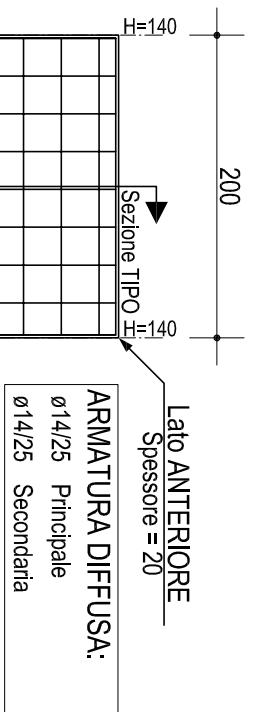


## Sezione A-A

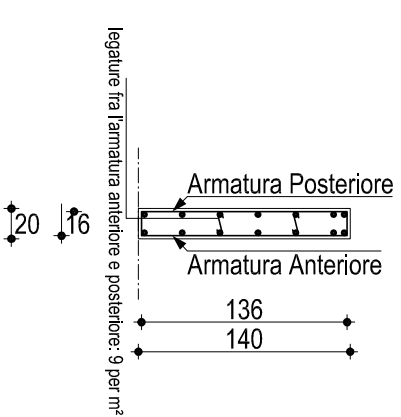


Scala: 1/50

# PARETE P4-P7 e P5-P8



## Sezione TIPO



Scala: 1/50

Comune di Stio

Provincia di Salerno

Canale di gronda: base e pareti laterali

Data		Oggetto	Calcoli strutturali opere d'arte.	Tavola	1
Revisione		Mitigazione del rischio idrogeologico alla frazione Gorga		scala	1/50
Protocollo		Committente	Amministrazione comunale di Stio		